

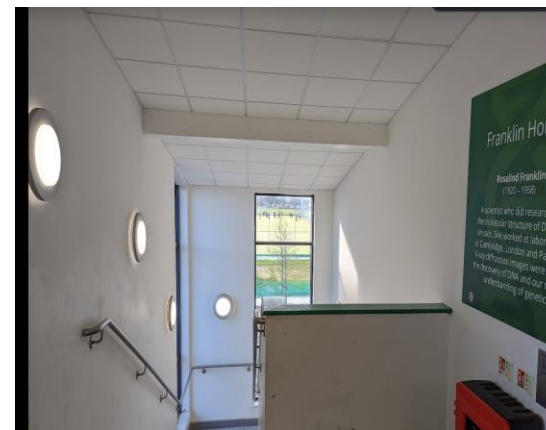
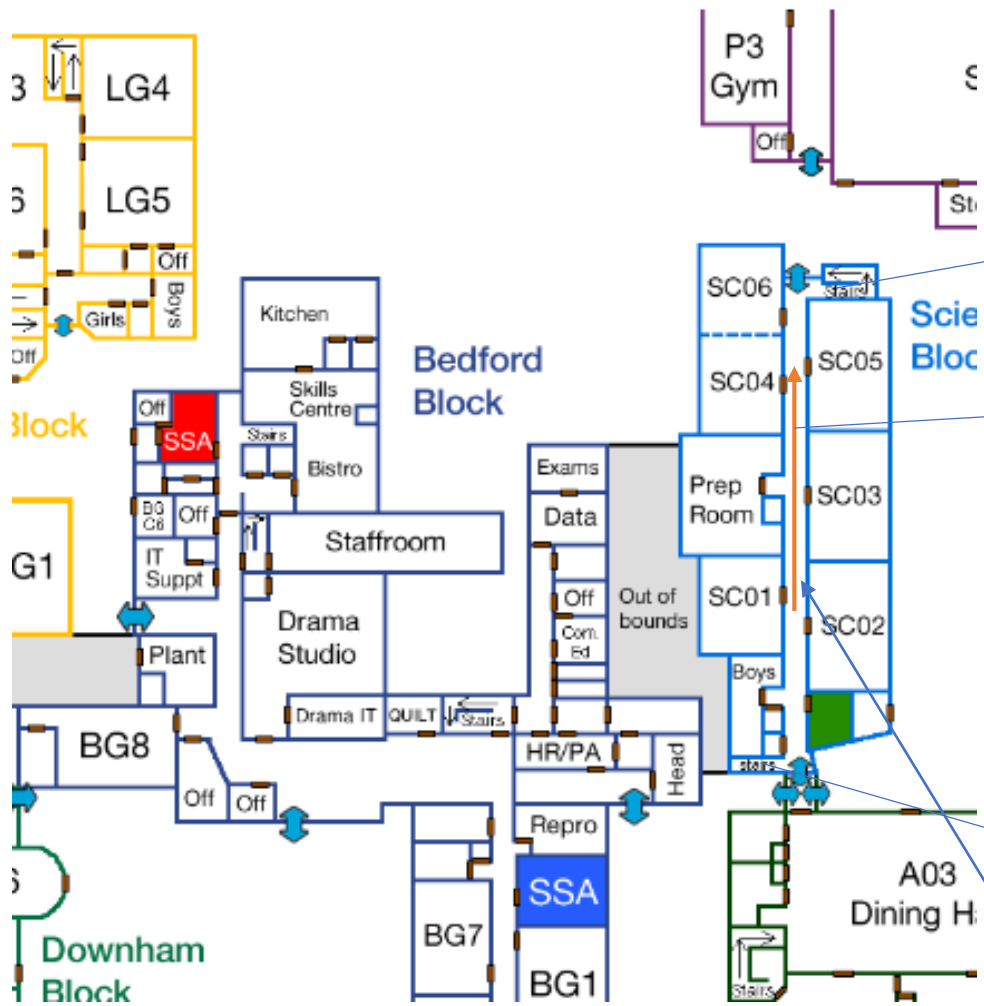
One Way System

Why is this necessary?

The consideration and care that students show to each other and to staff is exemplary – however – there are key times during the day when nearly all of the 1550 students who attend the college are moving around the site at the same time. These peak times tend to be at the end of break 2a – when everyone is moving for period 3 and at the end of period 4b when everyone is moving for period 5.

This movement is usually fine across the college but there are a couple of pinch points where the flow of students builds up – the introduction of a one way system in these pinch points will enable all students to move without worry or unease of the large numbers of students.

Science Block



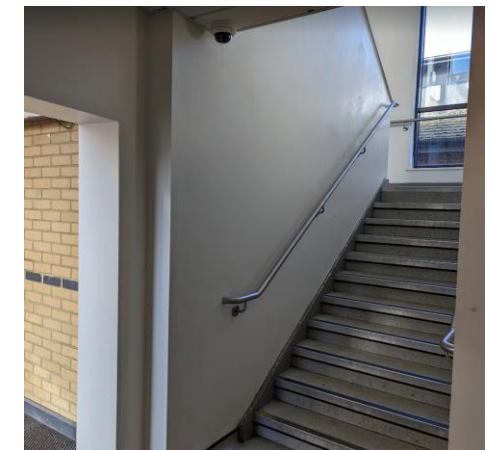
These stairs will be DOWN only



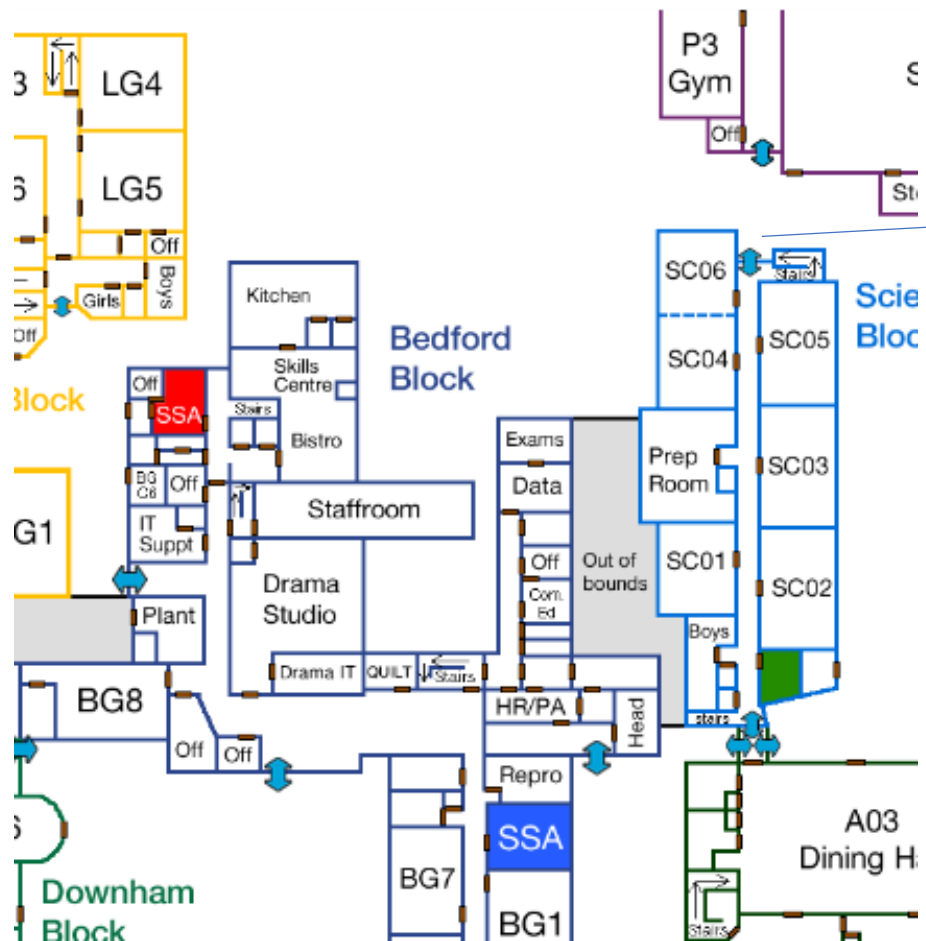
This corridor will be one way – you will only be able to walk along this corridor towards PE



This corridor will be one way – you will only be able to walk along this corridor towards PE

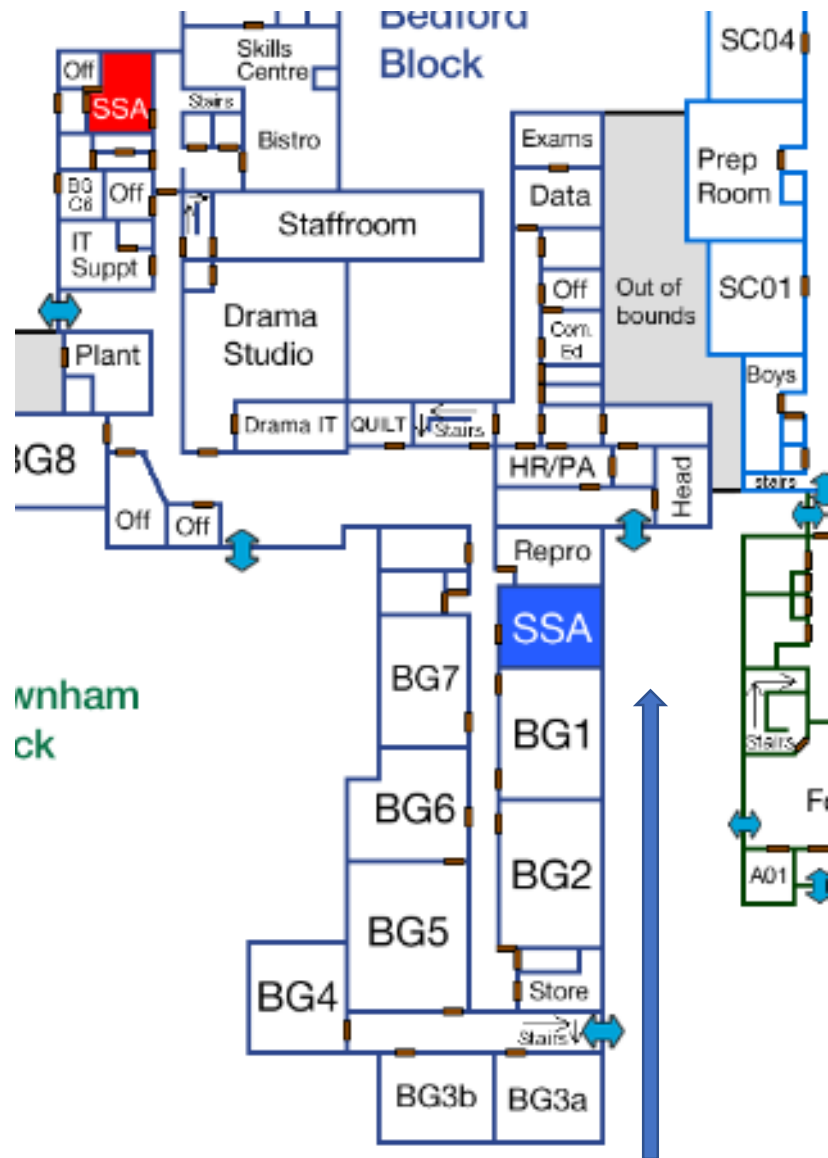


These stairs will be UP only



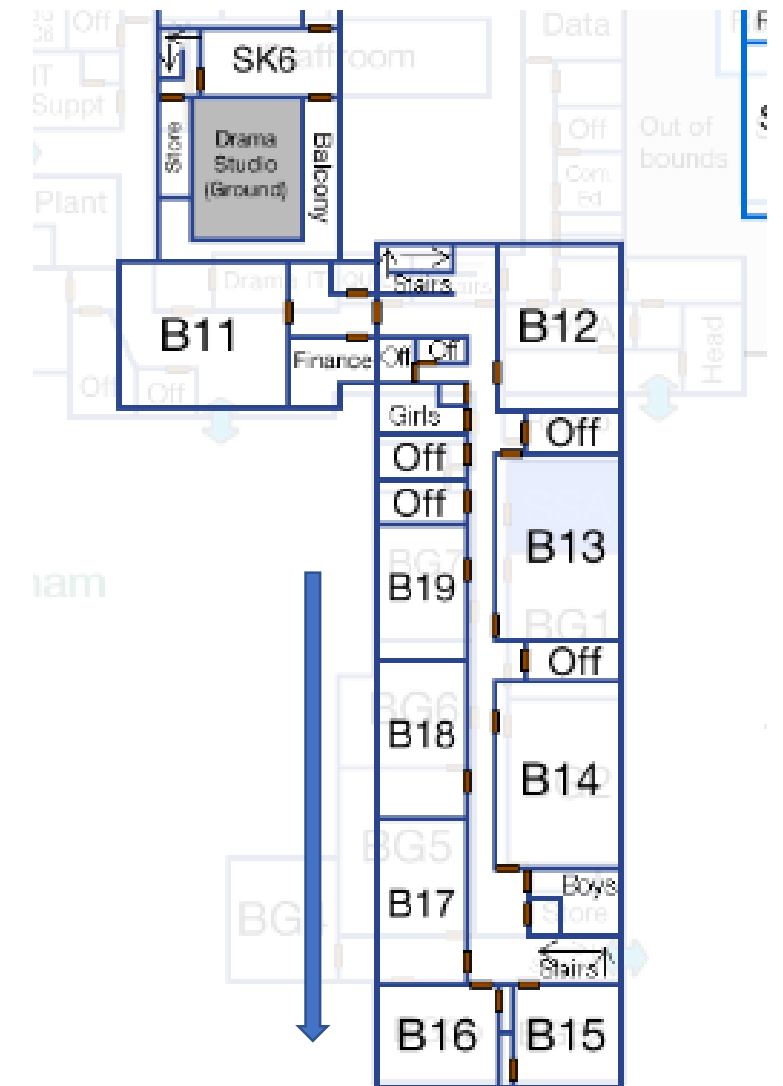
These doors will be exit only – you will not be able to enter the science block this way as you will be going against the traffic

Bedford Block



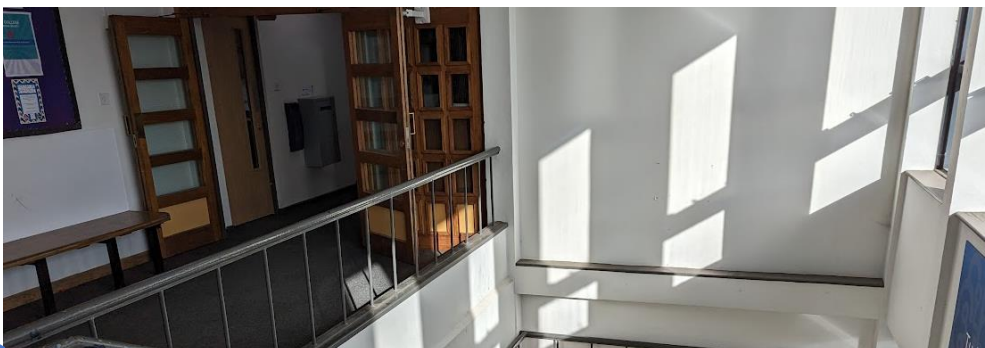
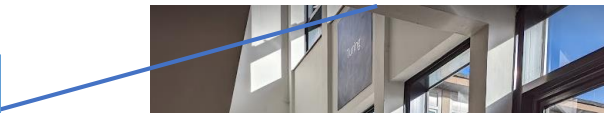
Bedford Ground floor will be one way from the BG3a end of the corridor towards the Turing House office.

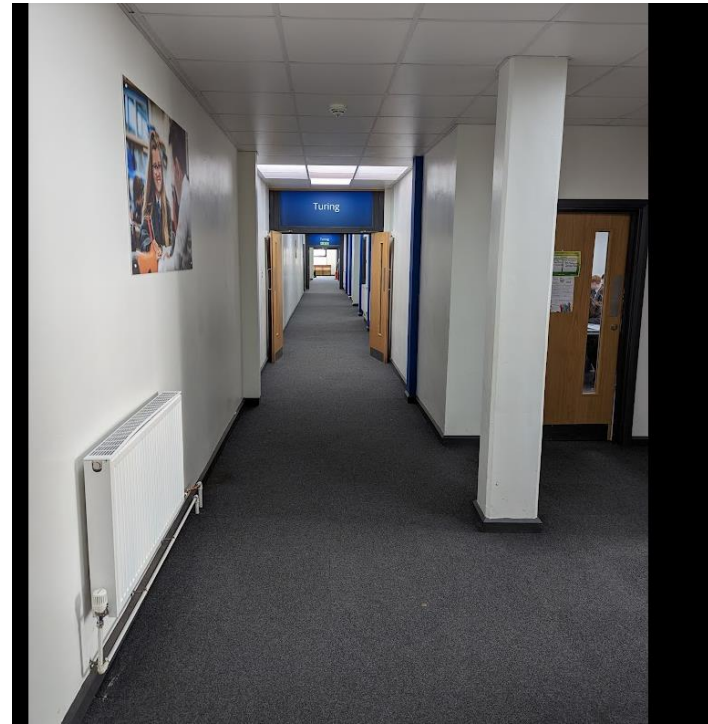
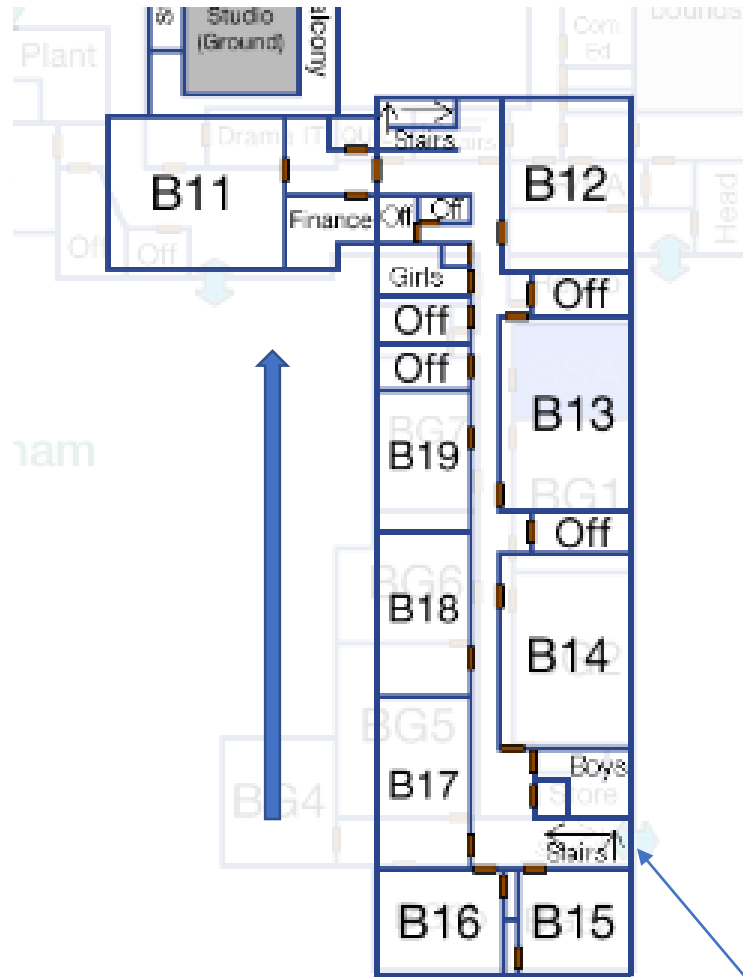
This means that you will not be able to move past Mr Warburton's office and turn left down the Bedford corridor to get to BG1 or BG2....





These stairs are the DOWN STAIRS

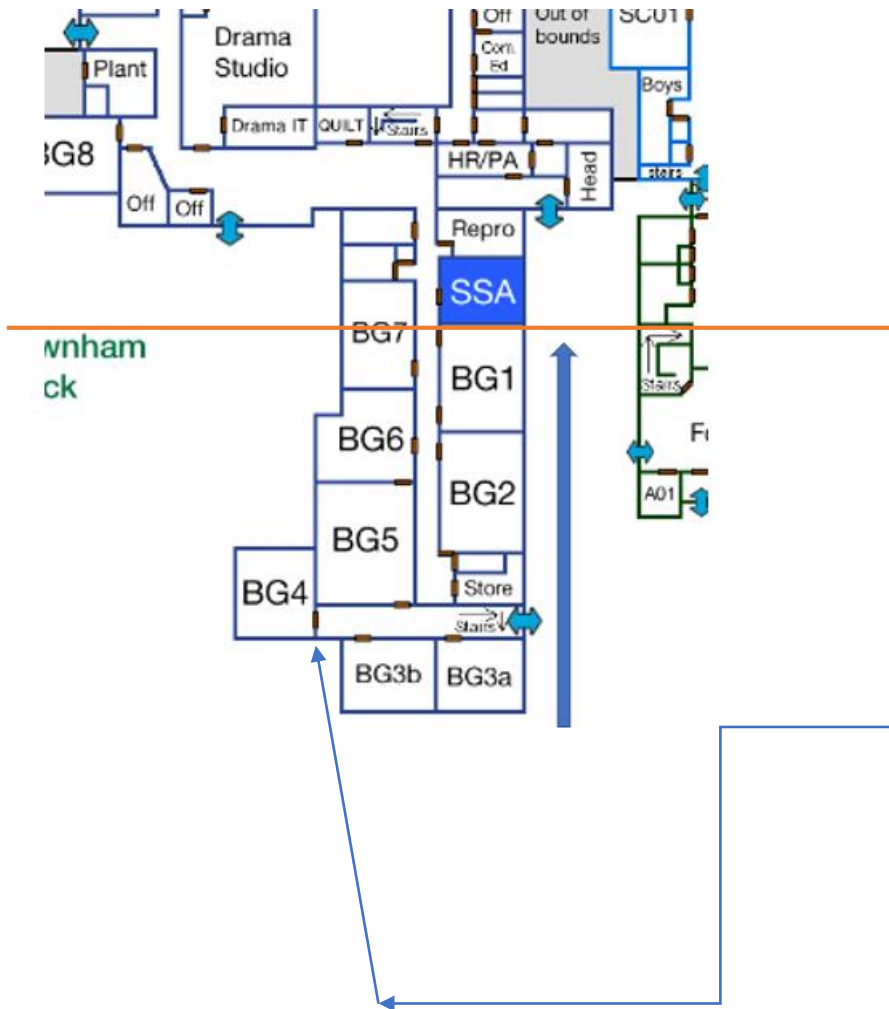




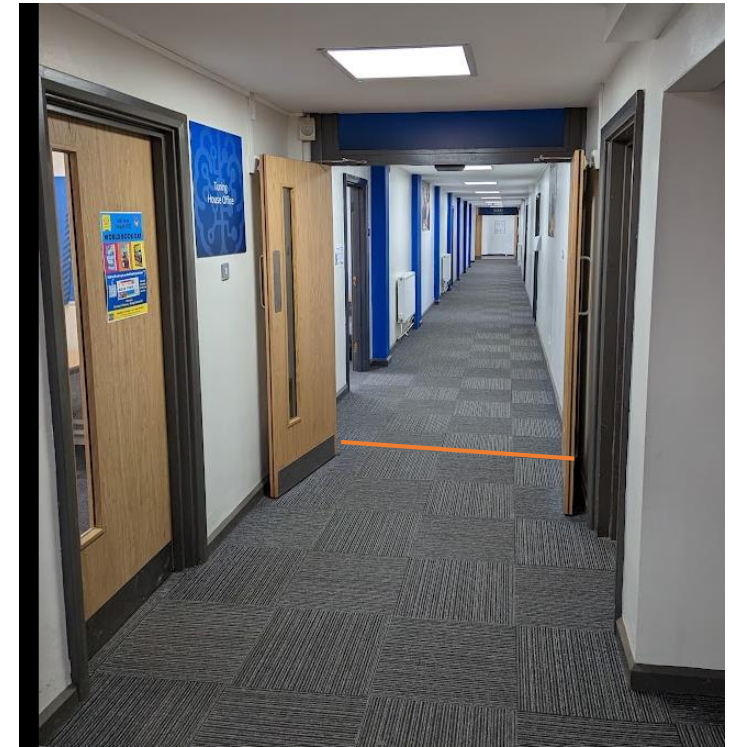
Students walk down
this corridor towards

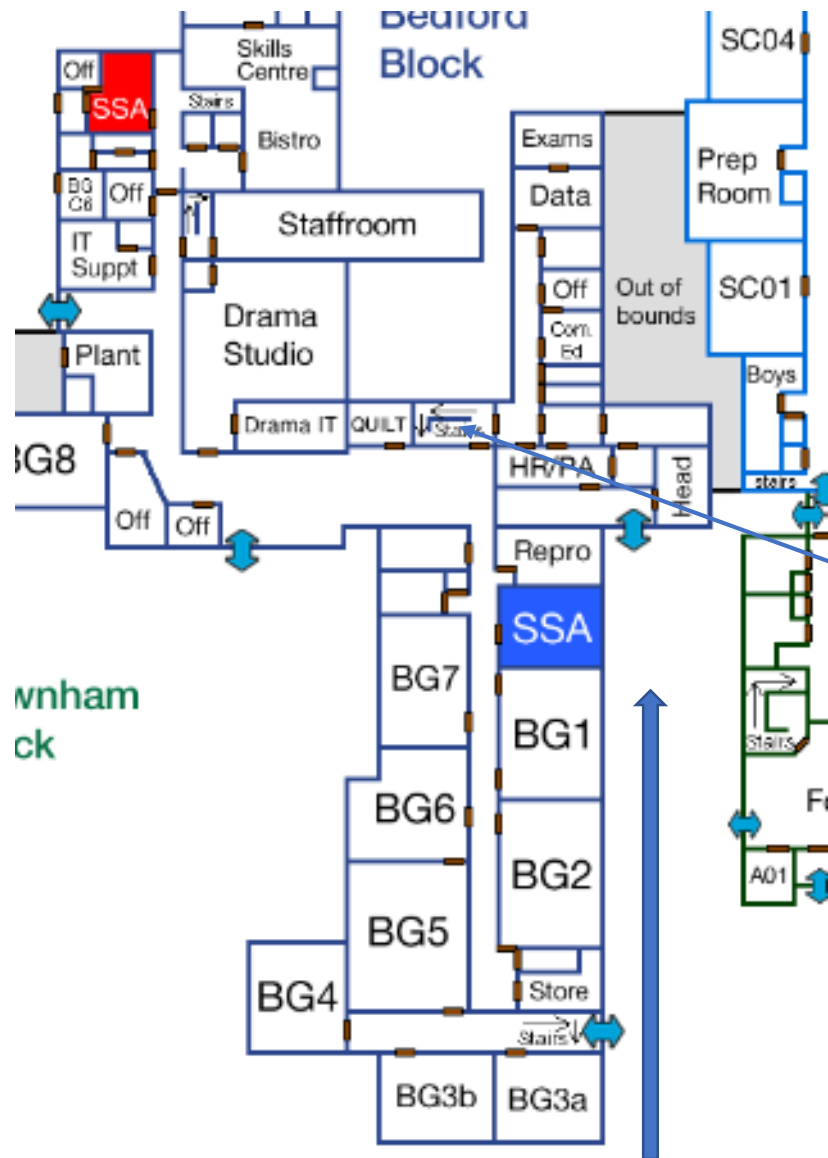
These stairs will be the UP
STAIRS only





Students WILL be able to move down the Bedford ground floor corridor in order to access the Turing House office – but students will not be able to move past the double doors to head down towards BG5 etc – they will need to head back out and enter via the door in between BG4 and BG3b





Example:

Q. I have a lesson in B13 and then in B15 – how do I get there?

A. Even though the two rooms are close by – you will need to walk down the downstairs – back outside the Bedford Block, reenter via the door between BG4 and BG3b – go back up the stairs to B15.

