

2122



**Bishop Laney**  
Sixth Form

# Welcome to Bishop Laney Sixth Form

Bishop Laney Sixth Form aims to provide a thriving college experience within a centre of academic and professional 16-19 excellence.

The academic and ecclesiastic legacy of Bishop Laney (1590-1674) is significant locally, and his commitment to the importance of education and training is timeless and embedded within the sixth form college's culture.

Bishop Laney Sixth Form is proud to be part of Ely College, providing Technical, Academic and Applied courses at Level 3 and Advanced Level, with Technical courses at Level 2 to support progression to Level 3 study.

Every student is known, valued and supported in the local community with a focussed selection of study programmes to align with their future aspirations.

We look forward to meeting with prospective students and their parents to share our vision with them.

**Mr Simon Warburton**  
*Principal of Ely College &  
Bishop Laney Sixth Form*

Thank you for your interest in Bishop Laney Sixth Form, where our emphasis on high standards in all that we do continues to ensure our students secure their first choice destination, year on year.

You will find enrichment opportunities designed to prepare you for your progression beyond college, after 2 or 3 years. Our very own Industry Mentors scheme is the cornerstone in this offer. We also have a thriving partnership with Norwich City Football Club; each year up to a quarter of our students develop employability and wider skills through the Regional Football Development Programme.

Each year we attract students from a range of schools within Cambridgeshire and beyond. Whether we're on your doorstep, or you're coming from further afield, we offer you a change from school; the independence to be yourself and the support to succeed.

In whatever form you are able to visit us this year, I look forward to meeting you!

**Mr Adam Steels**  
*Head of Bishop Laney Sixth Form*

# Our Courses

As a prospective Bishop Laney Sixth Form student, you can select from a combination of A Level and Technical courses to build your study programme. We also offer many of our Technical courses at Level 2 through our Transition Year programme intended to provide access to Level 3 (A Level) study twelve months later. The Transition Year includes the opportunity to resit English and Maths if required.

Many of our courses are available in different sizes expressed as **credits**. An A Level or Level 3 study programme should consist of at least 180 credits. The credit size at which each course is available is shown on the course page. See the examples below.

*A Levels are only available at 60 credits*



*Level 3 Health & Social Care might be available at all credit sizes*



*Applied Science might be available as either 120 or 180 credits, but not 60.*



## A Level Courses

Art & Design (Fine Art)  
Art & Design (Photography)  
Biology  
Business Studies  
Chemistry  
Computer Science  
Drama & Theatre  
English Language & Literature  
English Literature  
Fashion & Textiles  
Geography  
History  
Maths  
Music  
Philosophy & Ethics  
Physics  
Product Design  
Psychology  
Sociology

## Level 3 Technical Courses

Accounting (AAT)  
Applied Science  
Beauty Therapies  
Business  
Criminology  
Hairdressing  
Health & Social Care  
Media  
Professional Cookery  
Sport & Exercise Science

## Level 2 Technical Courses

Beauty Therapies  
Business Administration  
Hairdressing incl. Barbering  
Professional Cookery  
Sport & Activity Leadership

# Industry Mentoring

*Inspiring professional men and women will provide 1:1 support for each of our students.*

Working with a range of local businesses, we provide each of our students with a dedicated industry mentor from the local community. Through this scheme our students will benefit from a variety of volunteering, experiential and leadership opportunities.

Industry Mentors fire ambitions, set targets and provide advice on how to achieve them, guiding and advising about possible career options and the different routes that might be taken to secure them.

Each Mentor is fully trained to help nurture the skills students need to secure their next step: interview skills, support with CV writing and advice on how to secure work experience.

During the Autumn Term, this will include a number of preparatory tasks such as updating their achievement profiles, developing a knowledge of employers in their local area who operate in their chosen sector, and preparing for their first meetings with their mentor.

We hope as a result our students will leave with a better working knowledge of the routes of progression available to them, greater confidence to pursue their dreams and ambitions and a strong passion for learning and development.

The mentors also take part, with other local professionals in our annual Mock Interview day, arranged in conjunction with the Ely Cathedral Business Group.



# Norwich City Football Club

The Football Development and Education programme for all students is an ideal opportunity for any young player interested in developing their skills alongside study and career options.

At Bishop Laney Sixth Form, we work in partnership with the Norwich City FC Regional Development team to provide an exciting opportunity which allows you to continue your academic education, without limiting your subject choices while also progressing your footballing career.

The programme offers a positive, challenging and supportive elite learning environment; developing creative and independent decision makers, on and off the pitch. As part of the programme, you will take part in training or competitive games; working with UEFA Licensed coaches for approximately eight hours a week.

You need to attend a Norwich City FC trial, on the published dates during the academic year prior to the start of the course. Following a successful trial, you will be accepted onto the programme subject to a successful application for a study programme at the College.

Trial dates and contact details along with course information can be found on our application portal, [\*\*MyChoice@16\*\*](mailto:MyChoice@16) where you can select the programme as part of your overall application.

The application portal can be accessed from our website [\*\*www.bishoplaney.org\*\*](http://www.bishoplaney.org)



**For September 2020, we are delighted to be extending our partnership to offer an innovative Coaching Development and Education programme.**

Built on the successful model of the Football Development programme, the Coaching Development and Education programme offers hands-on experience of the coaching, skills development and talent acquisition aspects of the sports industry; alongside study and career options.

During the programme you will meet the requirements for specific and multi-sport national level coaching accreditations, which are funded for you as part of the programme. Work placements, seminars and the opportunity to shadow qualified coaches complete the offer.

Further details along with course information can be found on our application portal, [\*\*MyChoice@16\*\*](mailto:MyChoice@16) where you can select the programme as part of your overall application.

# Student Experience



At Bishop Laney Sixth Form, we set aside time across the week in our students' schedules for a wide variety of enrichment activities, so that you can broaden your skills, try out new activities, compete on behalf of the Sixth Form, and simply enjoy yourselves.

Studying at Bishop Laney is not just about achieving qualifications, our aim is to help prepare our students for professional life. Our **PLEDGES+** scheme provides a framework for accrediting the skills and experiences that are relevant to you as a sixth form student; help you to keep yourself and others safe and healthy; and which employers and training providers tell us are crucial for success in future employment, education and training.

This could include organising activities for younger students, working to support children with special educational needs, representing the college in sporting or academic events, contributing to newsletters or student council groups, and much more.

## *Extended Project Qualification*

Students in Year 12 are given the opportunity to complete the Extended Project Qualification, over 12 months from December to December. The Extended Project Qualification course is designed to help students apply the independent learning skills, including research which support progression to higher education or into professional working life; and adds extra UCAS points to your university application.

The project encourages creativity and curiosity; under the guidance of an assigned tutor; you will select a topic, plan, research and develop your idea before creating the finished product, which could be a written report, a production, performance or artefact. You will receive information during tutorial sessions during your first term.

## *Trips, Visits and Experience Days*

Along with numerous opportunities across the year, four experience days offer you the chance to enrich your study programme, explore your future progression or to push yourself to do something new or different. Everyone has the option to take part in the National Citizenship Service programme and the Duke of Edinburgh's Award.

As well as annual fixtures such as Charities Fair; Mock Interviews and Progression Day; a regularly changing programme means there's always something new to try. Whether it is training as a Mental Health Listener, refreshing your basic first aid skills; taking on the Escape Room and High Ropes course at Thetford Forest or learning to cook healthily on a budget, there's something for everyone!

# A Level Courses

Art & Design (Fine Art)  
Art & Design (Photography)  
Biology  
Business  
Chemistry  
Computer Science  
Drama & Theatre  
English Language & Literature  
English Literature  
Fashion & Textiles  
Geography  
History  
Mathematics  
Music  
Philosophy & Ethics  
Physics  
Product Design  
Psychology  
Sociology

# Art & Design (Fine Art)

60

120

180

Not  
Applicable

## GCE A Level Art & Design (Fine Art)

### Why study Fine Art?

Are you creative and imaginative? Do you enjoy exploring ideas and looking at things in different ways? If so, you should consider a course in Art & Design. Art is about looking, learning, thinking and communicating. You will enjoy developing your understanding of the visual world, learning practical skills and responding to ideas and issues in ways that are personal to you.

All of our art options are great companions to all other subjects as creativity, imagination and problem solving skills can give you great ideas for your other subjects.

This A Level qualification does carry UCAS points but if a student wishes to pursue a degree in an area of art and design, it is generally expected that students will progress to a one-year Foundation diploma in art and design course at further education level. Here you will build their portfolio for further study of their chosen art specialism at degree level.



### What will I study?

A level art and design is a practical course in which you learn by doing, so you will be able to create imaginative personal work. You will find out about a whole range of media, techniques and processes. You will develop your creativity and independent thought, learn to express yourself visually and let your imagination flourish.

In component 1 you will develop work for a personal investigation into an idea, issue, concept or theme supported by written material. This will count for 60% of your total A-level marks. In component 2 you will produce personal work in response to one of eight exciting starting points which will count for 40% of your total A-level marks.

**Entry Requirements:** At least 5 GCSE Grades 9 – 4 to include English and Maths; and Grade 5 or above in Art or a similarly titled subject.

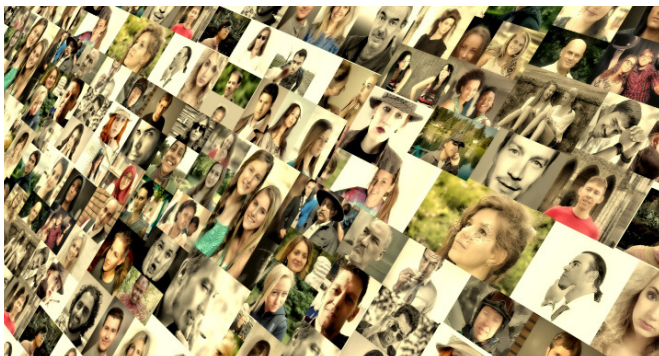
60

120

180

Not  
Applicable

# Art & Design (Photography)



## What will I study?

A level Photography is a practical course in which you learn by doing, so you will be able to create imaginative personal work.

You will find out about a whole range of media, techniques and processes both darkroom and digital:

- build confidence in creative and practical skills through consolidated studio-based studies
- understand the relationship between intellectual ideas and resolved artworks
- respond personally and meaningfully to stimuli, including historical and contemporary photographers, artists and designers, across a wide range of techniques and media both darkroom and digital.

## GCE A Level Art & Design (Photography)

### Why study Photography?

Are you creative and imaginative? Do you enjoy exploring ideas and looking at things in different ways? If so, you should consider a course in Photography.

Like the related Fine Art course, this course is also focused on looking, learning, thinking and communicating. You will enjoy developing your understanding of the visual world, learning practical skills and responding to ideas and issues in ways that are personal to you.

Arts subjects make a great companion to all other courses as creativity, imagination and problem solving skills can give you great ideas for your other subjects.

This qualification builds on the skills, knowledge and understanding developed through study at GCSE. At the end of the A level course you will have the knowledge and understanding needed for higher education. This qualification does carry UCAS points but if a student wishes to pursue a degree a foundation course in Photography course to build their portfolio for further study at degree level may be necessary.

**Entry Requirements:** At least 5 GCSE Grades 9 – 4 to include English and Maths; and Grade 5 or above in Art or a similarly titled subject.

## GCE A Level Biology

### Why study Biology?

Biology is the study of living things. Learning about biology teaches you the structure and function of not just your own body, but all the living organisms around you. This course examines the fundamental ways that all living things are connected, both in terms of our interdependence and our common evolutionary history.

The course covers an extremely wide breadth of knowledge, from the human circulatory system to biochemical molecules to the genetics of life to the essential chemical processes of photosynthesis and respiration.

A Level Biology can lead to technical and university courses in areas such as bioscience, clinical science, medicine and veterinary science. A Level Biology can prepare you for a suite of careers, including sports science, nursing, agriculture, engineering, and, of course, biological research.



### What will I study?

The course is split into 6 modules:

- Development of practical skills in biology
- Foundations in biology
- Exchange and transport
- Biodiversity, evolution and disease
- Communication, homoeostasis and energy
- Genetics, evolution and ecosystems

There is a strong emphasis on practical skills which are embedded throughout the course and link to all the constituent modules. Assessment is by two examinations at the end of the course.

**Entry Requirements:** At least 5 GCSE Grades 9 – 4 to include English & Maths; and Grade 6 or above in Biology or Combined Science.

60

120

180

Not  
Applicable

## GCE A Level Business

### Why study Business?

The A Level in Business is an excellent way for students to develop the knowledge and skills needed to analyse data, think critically about issues and make informed decisions.

These skills will involve studying key topics such as digital technology, business ethics and globalisation using business models, theories and techniques to investigate key business issues. These skills are important as they are needed for further study and employment.

### What will I study?

In the first year, you will study

- What is business?
- Managers, leadership and decision making
- Decision making to improve marketing performance
- Decision making to improve operational performance
- Decision making to improve financial performance
- Decision making to improve human resource performance

In your final year of study you will sit three exams papers which will focus on the topics from Year 1 and in addition:

- Analysing the strategic position of a business
- Choosing strategic direction
- Strategic methods: how to pursue strategies
- Managing strategic change

The course provides excellent preparation for higher level study, degree or degree apprenticeship programmes, as well direct entry into work, in either a local, national or international role. The skills which this course provides compliment others on offer, be that study in other areas of business, law or a focus on business's use of the technology.

## GCE A Level Chemistry

### Why study Chemistry?

Chemistry is the study of substances that make up all the matter around us, including its properties and how it interacts.

Chemistry is one of the fundamental sciences and helps to make sense of the world around us as well as innovate new technologies and solve the world's most pressing problems. A Level Chemistry can prepare you for a suite of careers, including medicine, engineering, pharmacy and the manufacturing industries.

A Level Chemistry can lead to technical and university courses in a wide range of disciplines. The analytical and mathematical skills developed are highly prized. As a result, chemistry is excellent preparation for a suite of careers, including medicine, engineering, pharmacy and the manufacturing industries.



### What will I study?

The course is split into 6 modules:

- Development of practical skills in chemistry
- Foundations in chemistry
- Periodic table and energy
- Core organic chemistry
- Physical chemistry and transition elements
- Organic chemistry and analysis

Assessment is through examinations taken at the end of the two years of the course and which must be endorsed by a non-examined demonstration of your practical skill.

60

120

180

Not  
Applicable

# Computer Science



## What will I study?

You will be introduced to the internal workings of the (CPU), data exchange techniques as well as considering legal and ethical issues. You'll examine the characteristics of contemporary processors, input, output and storage devices; types of software and the different methodologies used to develop software. Using computational thinking techniques, you will engage in problem solving and programming, exploring how computers and programs are used to solve problems.

You will be able to apply the principles of computational thinking to a practical coding programming project of your choice, which meets your interest; during which you will analyse, design, develop, test, evaluate and document a program written in a suitable programming language.

## GCE A Level Computer Science

### Why study Computer Science?

Computer Science will above all else be relevant to the modern and changing world of computing.

Computer Science is a practical subject where you can apply the academic principles learned in the classroom to real world systems. It is an intensely creative subject that combines invention and excitement, and can look at the natural world through a digital prism.

The course values computational thinking, helping you to develop the skills to solve problems, design systems and understand the power and limits of human and machine intelligence.

The course provides excellent preparation for higher level study, degree or degree apprenticeship routes, or direct entry into work, including international opportunities. The skills which this course teaches compliment others such as mathematics or a focus on business's use of the technology. Critical analysis, scoping and prototyping are just some of the transferable talents which employers and higher education institutions value.

**Entry Requirements:** At least 5 GCSEs at grades 9 – 4 to include English & Maths, and Grade 6 in Maths and Computer Science if studied.

# Drama & Theatre

60

120

180

Not  
Applicable

## GCE A Level Drama and Theatre

### Why study Drama & Theatre?

Drama is a practical, engaging and creative subject.

Studying drama will provide you with opportunities to interrogate drama and the work of others, to explore a range of drama as a practical art form, and to work independently to create your own drama performances making informed artistic choices.

Drama will help you develop your confidence in addressing audiences; and deepen your understanding of how others' thoughts and emotions can be represented and brought to life.

This course could be a valuable foundation for careers in areas such as acting, directing, broadcasting, drama therapy, studio management, theatre production, TV and radio presenting, writing, film and TV production, drama coaching, teaching, radio production, community arts work. It is also an excellent grounding for further study which can lead to careers in law, social work, psychology, teaching and many more careers.



### What will I study?

Non-examination assessment:

- Practitioners in practice (40%) Research and practically explore practitioners and the work of others. Creating, devising and performing original theatre
- Exploring and Performing texts (20%) Explore one performance text including performing live theatre.

Written Papers:

- Analysing Performance (20 %) Explore practically two performance texts on a chosen theme. Analyse and evaluate a live theatre performance.
- Deconstructing texts for performance (20%) Interpret and explore practically a performance text in order to consider how to create, develop and direct a performance for an audience.

**Entry Requirements:** At least 5 GCSE Grades 9 – 4 to include English & Maths; and Grade 5 or above in English Literature and Drama.

60

120

180

Not  
Applicable

# English Language & Literature



## What will I study?

There will be two examinations which cover

- Telling Stories
- Remembered places
- Imagined worlds
- Poetic voices - methods of language analysis
- Exploring conflict
- Writing about society
- Dramatic encounters - methods of language analysis

The non-examination assessment is titled 'Investigating and Creating Texts', and will allow you to study two texts of your choice and then produce two pieces of original writing in response to these texts.

## GCE A Level English Language and Literature

### Why study English Language & Literature?

English is an exciting and important qualification which will enable you to develop your skills and abilities, providing you with progression routes to higher education, employment or further training.

A Level English Language and Literature improves your ability to apply and integrate linguistic and literary approaches. You will develop techniques of analysis, evaluation and production of texts.

You can use this qualification to help you gain entry to a wide range of higher education courses including the academic study of English itself, or wider applications such as literature studies, politics, etymology or language acquisition. The course could also be a valuable foundation for careers in areas such as teaching, publishing, human resources, journalism, public services and business development.

**Entry Requirements:** At least 5 GCSE Grades 9 – 4 to include Maths; and Grade 5 or above in all English subjects entered.

## GCE A Level English Literature

### Why study English Literature?

You will encounter a variety of texts from the literary canon for three different modules. Two of these modules are assessed by examination: 'Love through the Ages' and 'Modern times: literature from 1945 to the present day'.

Studying Literature:

- Develops both analytical skills and empathy
- Develops an understanding of other periods and different cultures
- Improves formal writing and communication skills essential in the workplace
- Improves essay writing skills for other similar subjects

Literature is a fascinating subject in its own right! You will study texts from across the literary canon and learn how to analyse and interpret the books according to your individual interests. On a practical level, A-Level Literature is valued by universities and employers alike, even if you do not intend to pursue an English/Literature-based career.



### What will I study?

In 'Love Through The Ages', we explore different perspectives of love in different periods, including romantic love of many kinds; love and loss; social conventions and taboos; jealousy and guilt; truth and deception and other relevant themes.

'Modern times: 1945 to the present day' takes the end of WW2 as a starting point. It explores both modern and contemporary Literature's engagement with different issues that helped to shape the latter half of the 20th century and the early decades of the 21st century.

There is also a Non-Examined Assessment module. This is the 'Independent critical study: texts across time'. This is where you will have the choice to base your studies on your own interests.

60

120

180

Not  
Applicable

# Fashion & Textiles



## What will I study?

The course includes the study of consumer trends, textile products and materials, construction processes and surface decoration techniques as well as wider issues in the industry.

You will learn about materials and their application, including the performance characteristics of materials including fibres, yarns and fabrics. You will study the use of finishes, examine the enhancement of materials through dyeing, printing and explore modern industrial and commercial practice including digital design and manufacture.

Your non-exam assessment will require the practical application of the technical principles and designing and making principles in a single design and make project.

## GCE A Level Design Technology: Fashion & Textiles

### Why study Fashion & Textiles?

The world of fashion is a trillion-pound industry that employs over 800,000 people in the UK. Textiles is linked to the world of design, manufacturing, business and marketing.

You will combine creative and technological principles to create marketable and innovative garments; and investigate historical, social, cultural, environmental and economic influences on design, whilst enjoying opportunities to put your learning in to practice producing prototypes. You will gain a real understanding of what it means to be a designer, developing the skills sought by higher education and employers.

Students often go directly to a degree course in a range of disciplines, including fashion design, textiles design, surface pattern design, illustration, fashion marketing, management and business, costume design, or fashion journalism. Some choose to go onto study on an art foundation course, prior to pursuing a degree.

**Entry Requirements:** At least 5 GCSE Grades 9 – 4 to include English & Maths; and Grade 5 or above in a Technology subject if studied.

# Geography

60

120

180

Not  
Applicable

## GCE A Level Geography

### Why study Geography?

Geography combines well with both arts and science subjects. You may already be thinking ahead to your next steps, and so it is worth bearing in mind that geography is a broad based subject that really fits well for your future progression.

Geography gives you the opportunity to consider current issues such as; How do we measure development? What are the consequences of migration on societies?

Geography is highly valued by universities as an A Level choice, enhancing as it does, your skills of writing essays and extended reports.

For careers in sustainability and green issues, urban regeneration, energy supply, retail location, managing the effects of hazards and climate change, geography is an obvious choice. In the world of business, an understanding of global economics forms an important part of geography; whilst the future study of law, human rights, or international relations is supported by learning to consider geographical issues.



### What will I study?

The A Level Geography course will cover both the physical and human environments and the complex interaction of processes that shape our world.

It will also, importantly, show the applied side of the subject - how human intervention affects the environment and how people adapt and mitigate the effects of processes on their environment. This is complex and dynamic and varies from place to place depending on people's resources, technology and culture. There is plenty of room for discussion and extended research which will help you become an independent thinker and learner.

At the end of the course you will be able to show understanding of a range of opinions and to illustrate your answers with case studies from local, national and international examples.

**Entry Requirements:** At least 5 GCSE Grades 9 – 4 to include English & Maths; and Grade 5 or above in Geography.



### What will I study?

- Britain, c.1785 – c.1870: democracy, protest and reform.
- The unification of Italy, c.1830 – 1870.
- Civil rights and race relations in the USA, 1850 – 2009.

These topics are assessed through written examinations undertaken at the end of the two year course.

You will also complete a non-examined assessment in the form of an independently researched enquiry on historical interpretations, e.g. the origins of WW1 or origins of the Cold War. The only limitation is that it cannot duplicate coverage of unit 1. You will be assessed on their analysis and evaluation of interpretations.

### GCE A Level History

#### Why study History?

The qualification aims to develop the interest and enthusiasm of learners for history, and build an understanding of its value and significance in society today. It will assist in the understanding of different identities within society, and provide an appreciation of aspects such as social, cultural, religious, and ethnic diversity. It will help you to become an independent learner; a critical, reflective thinker, able to argue a case and reach substantiated judgements. You will make links and draw comparisons within or across different time periods and aspects of the past, enabling you to better assess the world in which we live today.

Students can progress from this qualification to higher education courses, such as degrees in history or in related subjects such as politics, English literature, law, philosophy, economics or geography. The study of history provides skills useful in a wide range of careers such as journalism and media, education, libraries, national and local government and the Civil Service.

# Mathematics

60

120

180

Not  
Applicable

## GCE A Level Mathematics

### Why study Mathematics

If you are wondering why you should choose to study A Level Mathematics, remember that it is a great way to keep your options open.

Mathematics is known as a 'facilitating subject' by universities, meaning that it paves the way for a plethora of degree courses. Whatever your future plans, studying A Level Mathematics will stretch your mind and endow you with abilities that stay with you for life. Whether you are interpreting statistics or managing a budget, your mathematical background will help you to think logically, analyse data and express yourself clearly.

Any maths qualification post-16 is a challenging but highly-valued qualification. It is difficult to think of a course or career that would not welcome it in combination with other subjects. Some students go on to study strongly-mathematical courses such as Mathematics, Physics, Computing, or Engineering. Others use the skills they have learnt in subjects such as Economics, Business, Geography, Architecture or Law.



### What will I study?

The Advanced GCE in Mathematics consists of three external exams: Papers 1 & 2: Pure Mathematics includes proof; algebra and functions; coordinate geometry in the  $(x, y)$  plane; sequences and series; trigonometry; exponentials; logarithms, differentiation; integration, and vectors.

Paper 3: Statistics & Mechanics includes statistical sampling; data presentation and interpretation; probability; statistical distributions; quantities and units in mechanics; kinematics; forces and Newton's laws; and moments.

Three themes will be applied along with associated mathematical thinking: Mathematical argument, language and proof, problem solving and mathematical modelling.

**Entry Requirements:** At least 5 GCSE Grades 9 – 4 to include English at Grade 4 or above and Maths at Grade 6 or above.

60

120

180

Not  
Applicable

## GCE A Level Music

### Why study Music?

Music is constantly evolving, inspiring creativity and expression in a way that no other subject can. The fact that you are considering studying A Level Music shows that you are passionate and enthusiastic about your instrument and/or composing. You will broaden your mind to be introduced to different musical styles/genres, acquire new vocabulary and advanced music theory knowledge, and develop analytical and enquiry skills to study all types of music and articulate your views and opinions in many different formats.

You should be working at Grade 4/5 standard on an instrument or in voice at the start of the course.

Music opens doors to so many opportunities as an academic, practical subject. You will develop written, analytical, practical and social/personal skills through studying A Level Music: independent learning, team working, performance and presentation skills, listening skills, essay-writing skills, confidence and self-esteem, creativity and self-expression are just a handful of the skill set you will develop during the course.

### What will I study?

A Level Music is taught, first and foremost, as a practical subject. You will be learning music theory through practical exercises, and you will also practically explore your areas of study set-work content. Composition makes up 25% of the course, where you will be expected to write two compositions, one will be 'free-choice'; the other will be in response to an external set-brief.

Appraising accounts for 40% of the A Level. Assessed through a 2 hour examination, you will answer short and long response questions considering both familiar and unfamiliar music of a variety of styles and periods. Performance is worth 35% of your qualification, producing a recital programme lasting a minimum of 10 minutes, performing music as either a soloist, within an ensemble, or using music production/technology.

## GCE A Level Philosophy

### Why study Philosophy & Ethics?

People enjoy philosophy and do well at it from all sorts of backgrounds and mental approaches: arts, maths, humanities, sciences. You may love precision; you may love opening up of the mind to see in a different way; you may love constructive arguing; you may love refusing to accept things just because someone tells you to. The abilities and capacities which will serve you best are tenacity and clarity of thought, willingness to listen and to try to understand, concentration and focus. Clear expression and the ability to be precise are necessary, so doing well in subjects that require exact learning and strong essay skills is good preparation.

Philosophy & Ethics will be an ideal preparation for going on to study the subject further. It is also an excellent A Level to take if you simply want to understand the key concepts and themes of philosophy and develop your ability to think critically. Philosophy & Ethics will also compliment other A levels like Sociology, History and Psychology.



### What will I study?

You will be able to demonstrate knowledge and understanding of the content, including through the use of philosophical analysis (conceptual analysis and argument analysis).

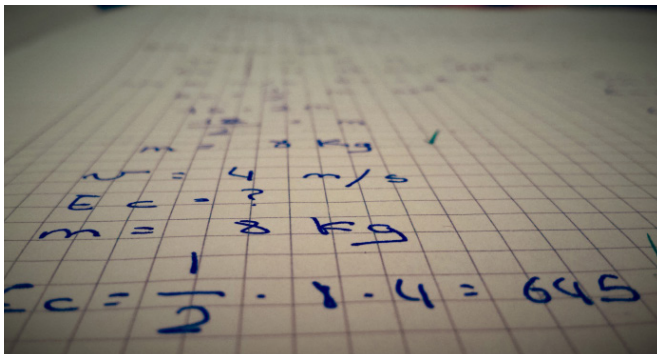
You will understand the ways in which philosophical arguments are developed, issues are raised, and arguments are reformulated in response to those issues understand the similarities and differences between the forms of reasoning used in different philosophical content areas, including the similarities and differences between different kinds of knowledge generate responses using appropriate philosophical formats, to a range of philosophical questions. Articulating definitions, arguments and counter-arguments; and applying and evaluating appropriate material to generate your own arguments are amongst the skills developed.

60

120

180

Not  
Applicable



## What will I study?

The course is split into 6 modules:

- Development of practical skills in physics
- Fundamental data analysis
- Physics in action
- Understanding the process
- Rise and fall of the clockwork universe
- Field and particle

Assessment is through examinations taken at the end of the two years of the course and which must be endorsed by a non-examined demonstration of your practical skill.

## GCE A Level Physics

### Why study Physics

Physics is the study of the nature and properties of matter and energy. It is a fundamental science that underpins our understanding of everything from the incredibly tiny to the astronomically large. Much modern technology is based on the discoveries and research of physicists. Physics is concerned with fundamental questions such as:

- How did the Universe begin?
- What is the Universe made of?
- What rules govern the behaviour of matter and energy?

A Level Physics can lead to vocational and university courses and / or prepare you for a suite of careers, including research scientist, medicine, engineering, rocket scientist, nuclear technician, nanotechnologist, particle physicist, architect and many more.

# Product Design

60

120

180

Not  
Applicable

## GCE A Level Design & Technology: Product Design

### Why study Product Design?

Design and technology is part of everyday life and is constantly evolving. You will investigate historical, social, cultural, environmental and economic influences on design and technology, whilst enjoying opportunities to put their learning in to practice by producing prototypes of their choice.

This A Level qualification is relevant; you will learn about contemporary technologies, materials and processes, as well as established practices. You will use your creativity and imagination to design and make prototypes that solve real and relevant problems, considering their own and others' needs.

At the end of the A Level course you will have the knowledge and understanding needed for higher education. This qualification does carry UCAS points; if a student wishes to progress in an area of art and design, it is generally expected that you would first take a foundation course to build a portfolio for further study. Opportunities also exist for you to move into employment or traineeships in a variety of industries.



### What will I study?

Core technical principles including the classification of materials; methods for investigating and testing materials and the performance characteristics of materials.

You'll consider and use papers and boards, polymer based materials, woods, metals, polymers (plastics) inc biodegradable, composites, smart & modern materials.

You'll learn about the enhancement of materials, the use of adhesives, fixings and finishes; as well as modern industrial and commercial practice ensuring preparation for further study or to use your knowledge in industry.

The non-exam assessment requires the practical application of the technical principles and designing and making principles in a single design and make project.

**Entry Requirements:** At least 5 GCSE Grades 9 – 4 to include English & Maths; and Grade 5 or above in a Technology subject if studied.

60

120

180

Not  
Applicable

# Psychology



## What will I study?

Our A Level course is examined by two papers at the end of the two years. Through the course you will explore a wide range of psychology topics which provide a broad grounding in the subject, including:

- Social influence and attachment
- Memory, biopsychology and psychopathology
- Approaches in psychology and research methods
- Issues and debates in psychology
- Schizophrenia and addiction
- Eating behaviour, stress and aggression
- Forensic psychology

## GCE A Level Psychology

### Why study Psychology

Ever wondered if prison really does change criminal behaviour? Or why some people conform? Or perhaps if the experiences you had before the age of five really do shape the person you are today?

Psychology will give you an understanding of the way people think and why people behave in certain ways. You will learn a variety of skills including analytical thinking, improved communication, problem solving and many more; all of which will prepare you for an exciting future with the possibility of a range of fantastic careers.

Degree courses commonly taken by students who have an A Level in psychology include Psychology itself, and a wide range of disciplines: English studies; sociology; business studies and teaching. Studying psychology at university can give you a whole host of exciting career options, including: business development; human resources; forensic psychology; occupational therapy; clinical psychology or nursing.

**Entry Requirements:** At least 5 GCSE Grades 9 – 4 to include Grade 5 or above in Maths and all English subjects entered.

# Sociology

60

120

180

Not  
Applicable

## GCE A Level Sociology

### Why study Sociology?

Studying sociology offers unrivalled insights into social and cultural issues.

It helps you develop a multi-perspective and critical approach to understanding issues around culture, identity, religion, crime, families and social power.

More than once during the course you're bound to ask yourself the question, "Why has society developed like this? With poverty, ignorance, crime and injustice."

Sociology is a great choice of subject for people who want a career in social work, nursing or medicine. The subject is also useful in a number of other careers, including marketing, advertising, PR, journalism, law or teaching. Possible degree options for students who have an A Level in sociology include sociology; psychology; English studies; business studies; law and teaching



### What will I study?

Education and methods in context: You'll consider the role of education in society. As part of your studies you'll look into gender and ethnicity differences in school achievement.

Crime and deviance with theory and methods: Examining criminal and deviant behaviour, you will explore the factors that might lead a person to follow this path in life, and the role of media in this aspect of society.

You'll also learn how to apply your own sociology research methods; conducting your own sociological research, from interviews to reviewing documents and official statistics; drawing on established theories and models.

A study of the theories underpinning cultures and the identities of individuals and groups concludes the course and provides a rounded introduction to a wide and varied subject.

**Entry Requirements:** At least 5 GCSE Grades 9 – 4 to include Maths; and Grade 5 or above in all English subjects entered.

# Level 3 Technical Courses

Accounting (AAT)  
Applied Science  
Beauty Therapies  
Business  
Criminology  
Hairdressing  
Health & Social Care  
Media  
Professional Cookery  
Sport & Exercise Science

# Accounting (AAT)

60

120

180

Not  
Applicable

## AAT Level 3 Advanced Diploma in Accounting

### Why study Accounting (AAT)?

The AAT qualification will allow you to develop the skills and knowledge that employers want within the accountancy and finance sector.

As a well-known and respected qualification it can open the doors to chartered accountancy, university or provide you with the skills to successfully run your own finance company.

Every business needs a good, effective accountant and you will improve your prospects with this valuable qualification.

A student who successfully completes the Level 3 programme of study can go onto either the final stage of the AAT Accounting qualification or university. The final stage of AAT, the Professional Diploma can open doors in the accounting profession; you can apply for AAT membership and have the initials MAAT after your name; you can become your own boss, or choose a pathway onto chartered studies.



### What will I study?

- Bookkeeping: understanding financial transactions and applying accepted principles of accounting, controls and double-entry bookkeeping.
- Costing and management accounting: understanding an organisation's cost recording systems
- Accounts preparation: understanding the processes involved in preparing published final accounts and compliance with regulations for VAT.
- Using software: using specialist and spreadsheet software to record and analyse financial transactions.
- Two synoptic assessments which take place during the course, combining accounting content above with an understanding of the processes, conduct and behaviours required to be effective in the finance workplace.

**Entry Requirements:** At least 5 GCSE Grades 9 – 4 to include English and Maths.

60

120

180

Not  
Applicable

# Applied Science

## BTEC Level 3 National Applied Science

### Why study Applied Science

Applied Science is a hands on science course that does not solely rely on exams for the final grade. The course is practical based and offers lots of opportunities to get out of college and into the workplace, from visiting hospitals and research centres; to technology companies and even quarries. One of the advantages of the Level 3 BTEC in applied science is that the course is adaptable to the students. For each of the 3 qualifications, there are some mandatory units and some optional units. If our students prefer Biology, for example, we can tailor the optional units to be Biology heavy and light on the Chemistry and Physics.



### What will I study?

The mandatory units, include:

- Principles and Applications of Science
- Science Investigation Skills
- Contemporary Issues in Science

Additional units which make up the course, dependent on qualification size, are assessed through a combination of internally assessed assignments and externally assessed exams, and cover content from the areas of Biology, Chemistry and Physics. Roughly 40% of the course is exam based. Assignments are set and marked at specific points during the year.

It is critical that students plan their time wisely and submit their assignments on time. Assignments and External Exams are graded as Pass, Merit, Distinction or Distinction\*.

Applied Science can prepare you for a suite of careers, including sports science, nursing, agriculture, engineering, and, of course, biological research. In the past our students have gone on to train as nurses, bioscientists and technicians having used their BTEC qualification to secure university offers for a number of different programmes.

**Entry Requirements:** At least 5 GCSE Grades 9 – 4 to include English and Maths.

# Beauty Therapies

60

120

180

Not  
Applicable

## VTCT Level 3 Diploma in Massage Therapies

### Why study Beauty & Massage Therapies Level 3?

The VTCT Level 3 Diploma in Massage Therapies is a technical level qualification aimed at 16-18 learners who are in a full-time Level 3 education programme and wish to pursue a career as an employed and/or self-employed massage therapist. This qualification has been developed collaboratively with employers, professional associations and key stakeholders in the beauty and massage therapy sector. The knowledge, skills and competencies gained will provide the best possible opportunity for progression into employment. It is likely that you will hold a Level 2 beauty therapy or equivalent qualification when starting the course.

Learners who achieve this qualification are eligible to join the British Association of Beauty Therapy and Cosmetology or Federation of Holistic Therapists. Learners could progress directly into employment in a variety of contexts, which include: commercial salons; destination/day spas; independent settings; cruise liners; hotel chains or care homes. Alternative routes include progression to related further study.



### What will I study?

This qualification is based on the national occupational standards for massage therapy and includes all the required elements to work effectively as a massage therapist.

You must achieve all mandatory units which will develop your knowledge and understanding of relevant anatomy and physiology, health and safety, the history and origins of massage therapies and how to effectively contribute to the overall running of a business.

You'll also develop the knowledge, understanding and skills to consult effectively with clients, show awareness of environmental sustainability and commercial skill, successfully promoting and retailing products, whilst also providing a variety of massage therapies; all of which are valued highly by employers.

**Entry Requirements:** At least 5 GCSE Grades 9 – 4 to include English or Maths.

60

120

180

Not  
Applicable



## BTEC Level 3 Business

### Why study Business Level 3

The Extended Diploma is a two year, full-time course that meets entry requirements in its own right for students who want to progress to higher education courses in business areas before entering employment.

It can also support students who want to progress directly to employment in job roles in business or business management and higher apprenticeships in the business sector.

### What will I study?

- Exploring a Business
- Developing a Marketing Campaign
- Personal and Business Finance
- Managing an Event
- Recruitment and Selection Process
- Investigating Customer Service
- Work Experience in Business
- International Business
- Principles of Management
- Business Decision Making
- Team Building in Business
- Training and Development
- Market Research

The qualification carries UCAS points and is recognised by higher education providers as contributing to meeting admission requirements to many relevant courses, for example: BSc (Hons) in Business and Management; BA (Hons) or BSc (Hons) in Business Studies; and BSc (Hons) in International Management.

# Criminology

60

120

180

Not  
Applicable

## Level 3 Applied Diploma in Criminology

### Why study Criminology?

If you have an interest in the science behind criminal activity, this is an ideal course. The course will prepare you with a range of transferable skills and consider their application. The course is designed to offer exciting and interesting experiences that focus learning through applied theories; through the application of knowledge and understanding in purposeful contexts linked to the criminal justice system.

The qualification would support your progression from any study at GCSE level, particularly courses in sociology, law, psychology, citizenship, history and humanities.

This qualification could lead to Higher Education Degree Courses, or support applications into the services. Across universities, there are a number of Criminology degree courses, which can be combined with Psychology or Sociology. Within the professional environment, it can lead to opportunities of employment within the justice system through many roles.



### What will I study?

There are four mandatory units which make up the course. Two of these units are externally assessed and two are internally assessed, through project work and assignments. Changing Awareness of Crime develops understanding of different types of crime, influences on perceptions of crime and why some crimes are unreported.

Crime Scene to Courtroom explores the criminal justice system through which you will develop the skills needed to examine information in order to review the justice of verdicts in criminal cases.

Criminological Theories considers why people commit crime. Crime and Punishment applies an understanding of criminality and criminological theories in order to evaluate the effectiveness of the social control via the justice process.

**Entry Requirements:** At least 5 GCSE Grades 9 – 4 to include English and Maths.

60

120

180

Not  
Applicable

# Hairdressing Level 3

## VTCT Level 3 Diploma in Hairdressing

### Why study Hairdressing Level 3

The VTCT Level 3 Diploma in Hairdressing is a Technical Qualification aimed at those who require a full-time Level 3 education programme and wish to pursue a career as an employed and/or self-employed junior hairdresser/hairstylist.

To be most successful, you will ideally hold a Level 2 qualification or equivalent in hairdressing. This qualification has been developed collaboratively with employers, professional associations and key stakeholders in the hairdressing sector. The knowledge, skills and competences gained will provide the best possible opportunity for progression into employment.

Career opportunities as a hairdresser/stylist exist in a variety of contexts, including: Commercial hair salons; independent/self-employed settings; product manufacturing and training; performance and media sectors; the armed services; and HM prison service among others. You may choose to develop further by completing a specialist qualification at Level 4 in a related area such as salon management or hair colour correction.



### What will I study?

This qualification is based on the national occupational standards for hairdressing and includes all the required elements to work effectively as a senior hairdresser/hairstylist.

Learners must achieve all mandatory units developing knowledge and understanding of relevant anatomy and physiology and health and safety; as well as the skills to consult with clients, provide a range of cutting and colouring services, and set, dress and finish hair.

In parallel, you will develop your communication and customer service skills, an awareness of environmental sustainability and commercial skills, all of which are valued highly by employers.

**Entry Requirements:** At least 5 GCSE Grades 9 – 4 to include English or Maths.

# Health & Social Care

60

120

180

Not  
Applicable

## BTEC Level 3 Health & Social Care

### Why study Health & Social Care?

A BTEC Level 3 qualification in Health and Social Care is a technical qualification that has been designed with the workplace in mind. It is about giving you the knowledge and skills required not just for employment but for life and the community in general.

You will develop professional and personal skills through interaction with people who either work in the sector or require support from the sector, as well as gaining the theoretical knowledge and understanding to underpin these skills.

This qualification is perfect for your next step whether it be higher education, an apprenticeship or employment. It is a good foundation for any career in the Health and Social Care sector, whether that is nursing, teaching or social work. This is a growing sector and the qualification makes you very employable.



### What will I study?

The course is flexible; this means that you study it as a 60, 120 or 180 credit qualification. The 60 credit extended certificate is equivalent to 1 A level and consists of 3 mandatory units and 1 optional unit. The 180 credit extended diploma is equivalent to 3 A levels and consists of 8 mandatory units and 5 selected units.

Depending on your chosen qualification size, units include:

- Human Lifestyle Development
- Working in Health and Social Care
- Anatomy and Physiology
- Understanding Mental Wellbeing
- Nutritional Health
- Sociological Perspectives

**Entry Requirements:** At least 5 GCSE Grades 9 – 4 to include English and Maths.

60

120

180

Not  
Applicable

## OCR Level 3 Digital Media

### Why study Media

The Level 3 Media course offers a range of units to reflect the range of opportunities available within the media sector.

It is an ideal foundation for students interested in a career in the media sector, providing you with understanding of media through engagement with media products, production processes and technologies. This leads to the application of practical and creative skills that transfer easily into the workplace

### What will I study?

As part of this course you will:

- Plan and produce a short film
- Plan and produce a magazine using industry standard software
- Plan and produce a talk and music radio programme
- Study the UK film industry
- Study the UK music industry

You will gain skills in the following areas:

- Camera work
- Photography
- Team work
- Adobe Creative Suite
- Audacity audio editing

The media industry is one of the UK's fastest growing industries. Whilst studying the course, you will develop audio, print and audio-visual editing skills using industry standard equipment, these skills could take you directly into the media industry. Alternatively, you could choose to continue your studies at university and complete a degree in a whole range of media related courses such as media production or journalism.

**Entry Requirements:** At least 5 GCSE Grades 9 – 4 to include English.

# Professional Cookery

60

120

180

Not  
Applicable

## Level 3 Technical Diploma in Professional Cookery

### Why study Professional Cookery Level 3?

This qualification is for you if you are keen to work towards becoming a chef in a professional kitchen. You are likely to have previous experience and/or a relevant Level 2 qualification in cookery, which this qualification will build upon.

This course will focus on how to prepare, cook and present different types of commodities; and allows you the opportunity to increase your all-round skills. Undertaking this qualification gives you proof of professional cooking skills, provides the skills and techniques required to progress to specialist Advanced Technical Diplomas for Professional Chefs.

This qualification is designed to help you enter employment with higher level of responsibility or at a more prestigious establishment. If you choose to enter employment at the end of this qualification, you could begin work as a commis chef with a variety of employers, including fine dining restaurants, gastro pubs, and respected hotels; or as a chef de partie; in charge of a particular area or section of the kitchen.



### What will I study?

- Legal and social responsibilities
- Financial control in the commercial kitchen
- Soups and sauces
- Fruit and veg
- Meat and offal
- Poultry
- Fish and shellfish
- Rice, pasta and grains
- Desserts and puddings
- Pastry products
- Biscuits, cakes and sponges
- Breads

**Entry Requirements:** At least 5 GCSE Grades 9 – 4 to include English or Maths.

60

120

180

Not  
Applicable

# Sport & Exercise Science

## BTEC Level 3 Sport & Exercise Science

### Why study Exercise & Sport Science

The qualification gives you the knowledge, understanding and skills that underpin study of the Sport and Exercise Science sector, and gives the additional breadth and depth to prepare you fully for further study or training.

This includes the opportunity for learners to choose several topics from a selection of options reflecting progression in Sport and Exercise Science.

The optional units have been designed to support progression to sport and exercise science courses in higher education.

This qualification is primarily designed to support progression to university, meeting the admission requirements for many relevant courses, for example: BSc (Hons) in Sport Science or BSc (Hons) in Sport and Coaching Studies. It also supports learners who may choose to progress directly to employment, as the transferable knowledge and skills give you an advantage in applying for entry level roles or apprenticeships.



### What will I study?

- Applied Research Methods in Sport and Exercise Science
- Applied Sport and Exercise Psychology
- Coaching for Performance and Fitness
- Field and Laboratory-based Fitness Testing
- Functional Anatomy
- Nutrition for Sport and Exercise Performance
- Sport and Exercise Physiology
- Biomechanics in Sport and Exercise Science
- Research Project in Sport and Exercise Science
- Physical Activity for Individual and Group-based Exercise
- Sociocultural Issues in Sport and Exercise
- Specialised Fitness Training
- Sports Injury and Assessment
- Sports Massage
- Technology in Sport and Exercise Science

**Entry Requirements:** At least 5 GCSE Grades 9 – 4 to include English and Maths.

# Level 2 Technical Courses

Beauty Therapies Level 2  
Business Administration Level 2  
Hairdressing Level 2 (also includes Barbering Level 2)  
Professional Cookery Level 2  
Sport & Activity Leadership Level 2

60

120

180

Not  
Applicable

# Beauty Therapies Level 2

## VTCT Level 2 Diploma in Beauty Therapy

### Why study Beauty Therapies Level 2

The VTCT Level 2 Diploma in Beauty Therapy is a Technical Qualification for you if you wish to pursue a career as an employed or self-employed beauty therapist. Achieving this qualification makes you eligible to become a member of the British Association of Beauty Therapy and Cosmetology or Federation of Holistic Therapists. This qualification has been developed collaboratively with employers, professional associations and key stakeholders in the beauty therapy sector. The knowledge, skills and competencies gained provide the best possible opportunity for progression into employment.



### What will I study?

This qualification is based on the national occupational standards for beauty therapy and includes all the required elements to work effectively as a beauty therapist:

- Health, safety and salon hygiene
- Consultation techniques and client care
- Manicure treatments
- Pedicure treatments
- Waxing services
- Facial treatments
- Skin type analysis
- Eyebrow shaping services
- Eyelash and eyebrow tinting services
- Make-up applications
- Anatomy and physiology for beauty therapists

You could progress directly into employment in a variety of contexts, which include: commercial salons; destination/day spas; independent settings; cruise liners; hotel chains or care homes. Whilst this qualification's primary purpose is to prepare learners for employment, you may choose to develop your knowledge and skills further by completing a specialist qualification at Level 3.

**Entry Requirements:** At least 3 GCSE Grades 9 – 3 or equivalents.

# Business Administration Level 2

60

120

180

Not  
Applicable

## **BTEC Level 2 Certificate in Business Administration**

### **Why study Business Administration Level 2?**

Do you like to be organised and methodical with how you work? Are you always looking for how to improve the way you and others work? Do you like to help and support others to complete their work?

If you answered yes to these questions, you would enjoy a business support role, within a large organisation or small to medium enterprise. This qualification allows you to develop the understanding of business systems including transferable skills such as communication, project management and IT. Business Support is a critical role in any business, developing and using processes that underpin the work of different areas.

This qualification provides opportunities to gain employment, including an apprenticeship, in job roles coordinating business support activities. These roles may be specific to an industry such as: Financial services; insurance; hospitality; manufacturing and the public sector. They may also be specific to a functional area within a business such as: Marketing; human resources; logistics and finance.



### **What will I study?**

- Understanding Administrative Services
- Providing Administrative Services
- Using Business Technology to Process and Communicate Information
- Planning, Organising and Supporting Business

25% of the content is assessed using an online examination, whilst the remaining 75% is assessed using assignments, projects and the recognition and reflect on successful practical experience. A work placement is a necessary requirement to ensure that the full assessment criteria of this course is met.

**Entry Requirements:** At least 3 GCSE Grades 9 – 3 or equivalents.

60

120

180

Not  
Applicable

# Hairdressing Level 2



## VTCT Level 2 Diploma in Hairdressing

### Why study Hairdressing Level 2

The VTCT Level 2 Diploma in Ladies Hairdressing is a Technical Qualification for you if you wish to pursue a career as an employed or self-employed junior hairdresser/hairstylist. Learners who complete this qualification are eligible to become a graduate State Registered Hairdresser (SRH) with The Hairdressing Council. This qualification has been developed collaboratively with key stakeholders in the hairdressing sector. The knowledge, skills and competencies gained will provide the best possible opportunity for progression into employment.

For details of Barbering, please see the online prospectus.

As a junior hairdresser/hairstylist, you could progress directly into employment in a variety of contexts, which include: Commercial hair salons; independent/self-employed settings; product manufacturing and training; performance and media sectors; the armed services; and HM prison service among others. You may also choose to develop your knowledge and skills by progressing to a Level 3 qualification.

### What will I study?

This qualification is based on the national occupational standards for hairdressing and includes all the required elements to work effectively as a junior hairdresser/hairstylist.

- Advise and consult with clients
- Blow-dry and style hair
- Colour and lighten hair
- Cut ladies hair
- Health, safety and hygiene
- Set and dress hair
- Shampoo, condition and treat the hair and scalp
- Style hair with electrical equipment

Throughout this qualification, you will develop your knowledge and understanding of relevant anatomy and physiology.

**Entry Requirements:** At least 3 GCSE Grades 9 – 3 or equivalents.

# Professional Cookery Level 2

60

120

180

Not  
Applicable

## Level 2 Certificate in Professional Cookery

### Why study Professional Cookery Level 2?

The Level 2 Technical Certificate in Professional Cookery is aimed at learners that are looking to start a career in the Hospitality and Catering industry.

You could progress into employment, onto an Apprenticeship, or further their studies by taking other qualifications at Level 3.

This qualification covers knowledge and skills you will need to progress to further learning and training, or to enter work in the Food Preparation and Service sector.

Through this qualification you will gain work specific skills and knowledge in Food Preparation and cooking, and provide an opportunity to connect your technical learning with real-life work placement. It will prepare you for study at Level 3 or training and employment in roles such as: kitchen or catering assistant; food service or beverage service assistant.



### What will I study?

This qualification covers knowledge and skills you will need to progress to further learning and training.

You will learn:

- Boiling, poaching and steaming
- Stewing and braising
- Baking, roasting and grilling
- Deep frying and shallow frying
- Cold food preparation.
- The structure of professional kitchens and the principles of working as a professional chef.
- How knives, tools and equipment are used in professional kitchens.
- How to work safely and hygienically.

**Entry Requirements:** At least 3 GCSE Grades 9 – 3 or equivalents.

60

120

180

Not  
Applicable

# Sport & Activity Leadership Level 2



## BTEC Level 2 Technical Diploma for Sport and Activity Leaders

### Why study Sport & Activity Leadership Level 2

The qualification gives you the knowledge, understanding and skills required for a career in sport and physical activity, leading onto employment, apprenticeships or further study.

The course involves many practical elements, developing key skills and leadership practice, all underpinned by the knowledge developed

### What will I study?

You will study a wide range of content areas, all related to the successful leadership of sporting and other group activity:

- Leading Sport Safely and Effectively
- Working in Sport and Activity Leadership
- Leading Sport and Physical Activity
- Coaching Sport
- Developing Skills for Sport and Activity Leadership
- Delivering a Sports Activity Event
- Getting Others Active Outdoors
- Leading Different Groups

This qualification is primarily designed to support students entering into post 16 education who need to study on a Level 2 course. It will run in conjunction with resitting GCSE English and Maths, as well as other supporting Level 2 courses. The course is a programme of study for one year, which can lead to apprenticeships, employment or further study at Level 3.

**Entry Requirements:** At least 3 GCSE Grades 9 – 3 or equivalents.

# How to Apply

## Cambridge Area Partnership (CAP) Schools

Students who attend CAP secondary schools should apply through their school's process using the **MyChoice16** online prospectus and application portal.

## Norfolk Local Authority Area Schools

Students who attend secondary schools within the Norfolk County Council area may apply through the **Help You Choose** online prospectus and application portal for young people in Norfolk.

Applications from students who do not attend schools or colleges in the areas outlined above should register and apply through **MyChoice16** where there is an online version of our prospectus with additional course information. The **MyChoice16** prospectus and application portal gives details of open and taster events, including trial dates for Football Development Programme trials with Norwich City Football Club.

***The MyChoice16 prospectus and application portal can be accessed from our website [www.bishoplaney.org](http://www.bishoplaney.org)***

Entry to Bishop Laney Sixth Form will not be determined by a formal interview; however an informal guidance meeting will be held to advise applicants on appropriate course selection.

A written reference will be sought from an applicant's current school or college as to the suitability of the course and level study being considered.

# Student Support

At Bishop Laney you will find a supportive environment, which has an ethos of hard work and commitment. You will have a personal tutor, access to a Student Adviser, and an Industry Mentor.

You will meet your tutor individually and as part of a group. They will work with you to make the transition to sixth form smoothly and support you in planning your progression. They also monitor your achievement on your courses, and progress related matters such as attendance. There is a tutorial programme in place, to ensure that each student has the advice and support for each stage of their time with us, but remaining flexible enough to meet your individual needs.

Bishop Laney is an exciting and friendly community, and we want your time with us to be both enjoyable and successful. All our staff will be working directly with you to help you achieve your own goals.

All staff are trained to respond effectively to any concern you raise, referring to specialist staff or external organisations, whichever is required. Mental Health First Aiders are available in the College with dedicated provision available for Bishop Laney Sixth Form students, should you need it. You can also access a college counsellor as required.

Students with disabilities, health conditions or additional learning needs are supported by trained, specialist staff. You should discuss any needs, including exam access arrangements at enrolment to make sure you are supported.

# Expectations



**We offer high standards of teaching and support at Bishop Laney, and expect high standards of commitment, effort and attendance from our students in return.**

There is an expectation that conduct is appropriate at all times. During their induction students are made aware of the expectations for conduct in taught sessions and for the use of study facilities and the common spaces.

## ***Dress code***

There is an expectation students dress appropriately. Our dress code is *smart/casual* and modesty should be considered, as well as ensuring that footwear is appropriate for each day's activities. In keeping with our aims, students do, on occasion, attend events and activities in "business" attire. Advice is given to students as to what is appropriate if required.

# College Campus

Students who attend Bishop Laney Sixth Form will be based Bishop Laney Centre, in the grounds of Ely College. Set in several acres of land, the Bishop Laney Centre houses classrooms, IT-rich study facilities, a canteen, student support facilities and dedicated social areas.

Students will also have access to the best amenities on offer locally. These include everything from dedicated science labs to art and photography studios, media studios, drama studios, music practice rooms, sports hall, state of the art fitness suite, tennis courts and an all-weather sports pitch.

Our Level 2 and Level 3 Technical Award courses benefit from the professional facilities in the Skills Centre. The Hideaway Salon is our rejuvenated training facility and the commercial salon provides students with the opportunity to work towards their Hair and Beauty Qualification in a professional setting.

Benjie's Bistro provides the setting for our Professional Catering & Cookery courses, preparing students for work in the catering sector. These teaching spaces allow students to establish the customer service skills required for their chosen industry, as well as practical work experience.

## ***Car Parking***

Students are welcome to apply for a free parking permit on a first come first served basis each academic year. Applications should be made as soon as possible, as space is limited. Please note that permits are only issued to full licence holders on production of the required evidence.



**Bishop Laney**  
Sixth Form

Bishop Laney Sixth Form  
Downham Road  
Ely  
CB6 2SH

**t:** 01353 652818 **e:** [admissions@bishoplaney.org](mailto:admissions@bishoplaney.org) **w:** [bishoplaney.org](http://bishoplaney.org)