



Cambridge Meridian Academies Trust

Safeguarding Adults at Risk Policy and Guidance

ELY COLLEGE

September 2019

Version Number:	1
Applicable To:	EC
Approved By Academy Council:	September 2019
Review Cycle:	Annually
Date of Next Review:	Autumn term 2020

Contents

1. Introduction	3
2. SEND Code of Practice January 2015	4
3. Adults Care & Support Statutory Guidance, The Care Act 2014, DOH	4
4. Definition of Adult safeguarding in The Care Act	5
5. The Ten Types of Abuse and Neglect	6
6. Reactions to Abuse	7
7. Making safeguarding personal	7
8. Desired Outcomes for the Individual	8
9. Process - Actions to be taken to address safeguarding concerns	8
10. The Prevent duty - Departmental advice for schools and childcare providers	9
11. Decisions made in the 'Best Interests' of the adult	9
12. Consent and the Sharing of Information	9
13. Confidentiality	10
14. Record keeping	11
15. Record Transfer from Education to Adult Settings	11
16. Whistleblowing Policy	11
17. Safer Working Practice	12
18. Other Linked Policies	12
19. Local Authority Practice Guidance	12

Appendix 1	Process Flowchart	13
Actions to be taken after becoming aware of an adult safeguarding concern. This should be read in conjunction with the Allegations Procedure (back page of the Safeguarding Child protection Policy)		
Appendix 2	Specific Indicators of Abuse	14
Appendix 3	Contact Details for Reporting Concerns	15
Appendix 4	Whistleblowing	17
Appendix 5	Safeguarding of Vulnerable Adults	

Version Control

Version no.	Update details	Page/Section	Date	Review Date
2	Add Appendix 5	2	24.2.18	
2	Amend person responsible	App 5, page 2	24.2.18	
3	n/a		05.2.19	

Introduction

Ely College fully recognises the responsibilities it has under The Care Act 2014, section 14.5 'Where someone is 18 or over but is still receiving children's services and a safeguarding issue is raised, the matter should be dealt with through adult safeguarding arrangements.' The six principles apply to further educational colleges or establishments. Also, the Mental Capacity Act (2005) requires there to be arrangements in place to safeguard adults at risk.

This policy is to be read in conjunction with Cambridgeshire County Councils Policy and Procedures and all schools are required to sign-up to these procedures.

This policy sets out how the school's governing body discharges its responsibilities to safeguard adults at risk of abuse or neglect.

The school will:

- ensure there is a designated senior person with lead responsibility for safeguarding adults at risk in the school;
- recognise the importance of the role of the designated person/s and ensure they have the time, training and support necessary to undertake their duties;
- ensure every member of staff, paid and unpaid, and members of the governing body, know who the designated members of staff are, and **how to pass on and record concerns about a learner immediately if urgent, or at least within 24hrs**
- ensure every member of staff, paid and unpaid, and members of the governing body know what the contingency arrangements are for when the designated members of staff are not available
- ensure that all staff, paid and unpaid, recognise their duty and feel able to raise concerns about poor or unsafe practice in regard to adults at risk and that such concerns are addressed sensitively and effectively in a timely manner in accordance with agreed whistle-blowing policies;
- ensure that parents are informed of the responsibility placed on the school and staff in relation to safeguarding adults at risk by setting out these duties in the school prospectus.
- Provide for parents, if requested, a copy of the school's Safeguarding Adults at Risk Policy and Guidance.
- ensure that the designated members of staff take advice from an adult safeguarding lead via Cambridgeshire County Council Customer Services:
 - Telephone: 0345 045 5202
 - Fax: 01480 498 066
 - Email: referralcentre-adults@cambridgeshire.gov.uk
 - Minicom: 01480 376 743
 - Text: 07765 898 732
 - The Emergency Duty Team (out of hours) is also available, Tel 01733 234724.

- Cambridgeshire County Council Safeguarding Adults at Risk Referral Form is available (See Appendix 2)
- Cambridgeshire County Council Safeguarding Adults at Risk Policy and Procedure (www.cambridgeshire.gov.uk/social/adultprot/)

SEND Code of Practice January 2015

Section 3.51:

Young people with SEN or disabilities turning 18 may become eligible for adult social care services, regardless of whether they have an EHC plan or whether they have been receiving services from children's social care.

Section 3.52:

The Care Act 2014 and the associated regulations and guidance set out the requirements on local authorities when young people are approaching, or turn, 18 and are likely to require an assessment for adult care and support. These are intended to support effective transition from children's to adult social care services. For those already receiving support from children's services, local authorities must continue to provide children's services until adult provision has started or a decision is made that the young person's needs do not meet the eligibility criteria for adult care and support following an assessment. Children's services must not be discontinued simply because a young person has reached their 18th birthday.

Section 8.73:

Where a safeguarding issue arises for someone over 18 with an EHC plan, the matter should be dealt with as a matter of course by the adult safeguarding team. They should involve the local authority's child safeguarding colleagues where appropriate as well as any relevant partners (for example, the police or NHS) or other persons relevant to the case. The same approach should apply for complaints or appeals.

Adult Care and Support Statutory Guidance Issued under the Care Act 2014, DOH. *(for people aged 18 and over)*

Section 14. Safeguarding

(This provides guidance on relevant parts of sections 42–46 of the Care Act 2014)

14.2. The safeguarding duties apply to an adult who:

- has needs for care and support (whether or not the local authority is meeting any of those needs) and;
- is experiencing, or at risk of, abuse or neglect; and
- as a result of those care and support needs is unable to protect themselves from either the risk of, or the experience of abuse or neglect.

(For the purpose of this guidance 'care and support' will be taken to include all care services provided in any setting or context.)

14.20. In 2013, the Home Office announced changes to the definition of domestic abuse:

- Incident or pattern of incidents of controlling, coercive or threatening behaviour, violence or abuse... by someone who is or has been an intimate partner or family member regardless of gender or sexuality

Includes: psychological, physical, sexual, financial, emotional abuse; so called 'honour' based violence; Female Genital Mutilation; forced marriage. *Age range extended down to 16.*

14.5.

Where someone is 18 or over but is still receiving children's services and a safeguarding issue is raised, the matter should be dealt with through adult safeguarding arrangements. For example, this could occur when a young person with substantial and complex needs continues to be supported in a residential educational setting until the age of 25 (see also chapter 16 of the Care Act guidance). Where appropriate, adult safeguarding services should involve the local authority's children's safeguarding colleagues as well as any relevant partners (e.g. the Police or NHS) or other relevant persons.

Section 16. Transition to adult care and support

(This provides guidance on relevant parts of sections 58-66 of the Care Act 2014, and The Care and Support (Children's Carers) Regulations 2014)

This section covers:

- When a transition assessment must be carried out;
- Identifying young people who are not already receiving children's services;
- Adult carers and young carers;
- Features of a transition assessment;
- Cooperation between professionals and organisation;
- Providing information and advice once a transition assessment is completed;
- Provision of age appropriate local services and resources;
- After the young person in question turns 18;
- Combining EHC plans with care and support plans after the age of 18;
- Continuity of care after the age of 18;
- Safeguarding after the age of 18;
- Ordinary residence and transition to higher education;
- Transition from children's to adult NHS Continuing Healthcare.

Definition of Adult safeguarding in The Care Act:

'Safeguarding means protecting an adult's right to live in safety, free from abuse and neglect. It is about people and organisations working together to prevent and stop both the risks and experience of abuse or neglect, while at the same time making sure that the adult's wellbeing is promoted including, where appropriate, having regard to their views, wishes, feelings and beliefs in deciding on any action. This includes that adults sometimes have complex relationships and may be ambivalent, unclear or unrealistic about their personal circumstances.'

Incidents of abuse may be one-off or multiple, and affect one person or more.

Professionals and others should look beyond single incidents or individuals to identify patterns of harm, just as the Care Quality Commission does when it looks at the quality of care in health and care services. Repeated instances of poor care may be an indication of more serious problems and of what we now describe as organisational abuse. In order to see these patterns it is important that information is recorded and appropriately shared.

Patterns of abuse vary and include:

Serial abusing in which the perpetrator seeks out and 'grooms' individuals. Sexual abuse sometimes falls into this pattern as do some forms of financial abuse; long-term abuse in the context of an ongoing family relationship such as domestic violence between spouses or generations or persistent psychological abuse; or Opportunistic abuse such as theft occurring because money or jewellery has been left lying around.

Anyone may carry out abusive or neglectful acts, including:

- spouses/partners;
- other family members;
- neighbours;
- friends;
- acquaintances;
- local residents;
- people who deliberately exploit adults they perceive as vulnerable to abuse; • paid staff or professionals; and
- volunteers and strangers.

Abuse can happen anywhere: for example, in someone's own home, in a public place, in hospital, in a care home or in college. It can take place when an adult lives alone or with others.

The Ten Types of Abuse and Neglect:

- **Physical abuse** – including assault, hitting, slapping, pushing, misuse of medication, restraint or inappropriate physical sanctions.
- **Domestic violence** – including psychological, physical, sexual, financial, emotional abuse; so called 'honour' based violence.
- **Sexual abuse** – including rape, indecent exposure, sexual harassment, inappropriate looking or touching, sexual teasing or innuendo, sexual photography, subjection to pornography or witnessing sexual acts, indecent exposure and sexual assault or sexual acts to which the adult has not consented or was pressured into consenting.
- **Psychological abuse** – including emotional abuse, threats of harm or abandonment, deprivation of contact, humiliation, blaming, controlling, intimidation, coercion, harassment, verbal abuse, cyber bullying, isolation or unreasonable and unjustified withdrawal of services or supportive networks.
- **Financial or material abuse** – including theft, fraud, internet scamming, coercion in relation to an adult's financial affairs or arrangements, including in connection with wills, property, inheritance or financial transactions, or the misuse or misappropriation of property, possessions or benefits.
- **Modern slavery** – encompasses slavery, human trafficking, forced labour and domestic servitude. Traffickers and slave masters use whatever means they have to coerce, deceive and force individuals into a life of abuse, servitude and inhumane treatment.
- **Discriminatory abuse** – including forms of harassment, slurs or similar treatment; because of race, gender and gender identity, age, disability, sexual orientation or religion.
- **Organisational abuse** – including neglect and poor care practice within an institution or specific care setting such as a hospital or care home, for example, or in relation to care

provided in one's own home. This may range from one off incidents to on-going illtreatment. It can be through neglect or poor professional practice as a result of the structure, policies, processes and practices within an organisation.

Neglect and acts of omission – including ignoring medical, emotional or physical care needs, failure to provide access to appropriate health, care and support or educational services, the withholding of the necessities of life, such as medication, adequate nutrition and heating

Self-neglect – this covers a wide range of behaviour neglecting to care for one's personal hygiene, health or surroundings and includes behaviour such as hoarding.

Signs of abuse and neglect

Workers across a wide range of organisations need to be vigilant about adult safeguarding concerns in all walks of life including, amongst others in health and social care, welfare, policing, banking, fire and rescue services and trading standards; education, leisure services, faith groups, and housing.

GPs, for example and in particular, are often well-placed to notice changes in an adult that may indicate they are being abused or neglected.

Findings from Serious Case Reviews have sometimes stated that if professionals or other staff had acted upon their concerns or sought more information, then death or serious harm might have been prevented. **(See “Specific Indicators of Abuse”, Appendix 2).**

Reactions to Abuse

The consequences of abuse may have profound effects on the adult involved. The person may:

- deny that abuse has occurred, even when there is evidence to the contrary,
- attempt to persuade others that an abusive relationship is normal,
- withdrawal from social activity, ranging from normal activities to total lack of communication,
- show increased agitation and anxiety, from attention-seeking behaviour to overly subservient behaviour,
- experience depression,
- experience confusion, characterised by a deterioration in a previously confident person,
- change their behaviour or personality suddenly and unexpectedly,
- demonstrate physical or verbal aggression, or become prone to over-reaction
- demonstrate self-neglect, including the loss of self-esteem, deterioration in appearance, weight loss or erosion of personal confidence

Making safeguarding personal

When abuse has been disclosed, reported or observed, it is important that the person be treated with dignity and respect and is involved fully in the discussions about them – making safeguarding personal for them.

They have the right:

- to be listened to when they report abuse of themselves and/or others, to appropriate education/information in order to identify behaviour which constitutes abuse and the rights to informed decision-making and consequent risk,

- to have the investigation processed where possible through a timescale with which they can be comfortable,
- to privacy and confidentiality in the conduct of the investigation,
- to be assisted by an interpreter, advocate, relative or carer in giving information, or evidence, unless the evidence which is to be given is subject to separate rules, e.g. police procedures,
- where a person's capacity is compromised to have decisions made in their best interest,
- to expect arrangements to be made to promote safety and welfare in both the short and long term,
- to expect that the issues of power, coercion and intent on the part of the alleged abuser to the alleged victim are given particular attention,
- not to have to undergo repeated presentations of information/evidence, except as required in criminal proceedings,
- to be involved in decisions made as a result of the investigation,
- to not participate in the investigation,
- to have access to the police action for justice procedures where appropriate.

Desired Outcomes for the Individual

They:

- are safe from continuing harm and / or abuse
- feel that they have recovered from the abuse or neglect
- are empowered and able to manage their situations
- have their stated objectives and desired results met
- believe that their views, worries and wishes are taken seriously
- feel they haven't had to compromise their safety and wellbeing at the cost of having relationships with other people
- develop stronger networks that are also protective
- know how to take precautions against harm and how to keep safe
- know who to contact to find out information
- feel in control and not driven or controlled by the safeguarding adults process
- can get help from someone who is independent

Procedures - Actions to be taken to address safeguarding concerns

It is not the responsibility of anyone working in the school to decide whether or not abuse has taken place. Staff members must raise all concerns with the designated person (**see process flowchart Appendix 3**).

Designated Person/s for Safeguarding Adults are:

The designated person will devise a plan of action, taking responsibility for overseeing safeguarding processes, reporting and recording activities in the school, based on guidance from the local authority,.

Any allegation made against a member of staff or a volunteer should be reported to the Head Teacher, who will seek advice from the Named Senior Officer for Education. In the event of an allegation being made against Head Teacher, this should be reported to the Chair of Governors.

If a disclosure of abuse is made by a learner, they should have the procedure that will be followed explained to them, and that it may not be possible for the school to maintain confidentiality.

If a learner makes an allegation about another organisation this should be reported to the Designated Person who will take appropriate action.

The Prevent duty - Departmental advice for schools and childcare providers

The Prevent duty is the duty in the Counter-Terrorism and Security Act 2015 on specified authorities, in the exercise of their functions, to have due regard to the need to prevent people from being drawn into terrorism.

The main points of this advice are to:

- explain what the Prevent duty means for schools and childcare providers;
- make clear what schools and childcare providers should do to demonstrate compliance with the duty; and
- inform schools and childcare providers about other sources of information, advice and support.

Decisions made in the 'Best Interests' of the adult and people aged 16/17 years:

In situations where the adult is judged to lack capacity in relation to the decision that needs to be made, decisions can be made in their 'best interests'.

Such decisions need to be made in accordance with the five principles of the Mental Capacity Act 2005, of which 'best interests' is one. The Mental Capacity Act 2005 sets out a statutory framework for acting and making decisions on behalf of people aged 16 years and over who lack the mental capacity to act or make such decisions for themselves.

Consideration should be given to the following:

- so far as ascertainable, the person's past and present wishes and feelings and the factors that they would consider if they were able to do so
- the need to permit and encourage that person to participate, or to improve their ability to participate, as fully as possible in anything done for and any decision affecting them

If it is practical and appropriate to consult them, the views as to that person's wishes and feelings and as what would be in their best interests of:

- any person named by them as someone to be consulted on those matters, e.g. **parents/carers**

- anyone (whether their spouse, a relative, friend or other person) engaged in caring for them or interested in their welfare
- the holder or any continuing power of attorney granted by them
- whether the purpose of which any action or decision is required can be effectively achieved in a manner less restrictive of their freedom of action.

In the case of anything done or a decision made by a person other than the Court it shall be sufficient if that person reasonably believes that what they do or decides is in the best interests of the person concerned. (Law Commission Report No.231)

Consent and the Sharing of Information

Informed consent of the learner should be sought and obtained. Consent must be freely given after the alternatives and consequences are made clear to the person from whom permission is being sought.

If the data is classified as sensitive data, the consent must be explicit, and specific detail of the processing should be explained, the types of data to be processed, the purposes of the processing and any specific aspects of the processing which may affect the individual e.g. disclosures.

Where an overriding public interest exists:

If informed consent has not been sought or sought and withheld, the school must consider if there is an overriding public interest of justification for sharing the information to a third party organisation.

In making this decision and compliant with the Human Rights Act, the following questions may be considered:

- Is sharing the information necessary for the prevention or detection of crime, to protect public safety or to protect the rights and freedoms of others?
- Is sharing the information necessary to promote the safety of young people or adults?
- What risk to others is posed by this individual (alleged offender)?
- What will be the impact of sharing the information for the alleged offender?
- Will sharing the information be proportionate to the intended aim?
- Is there an equally effective but less intrusive alternative means of achieving that aim?

Having due regard to the seriousness of the abuse and the potential risk to others, it is likely that sharing information in such circumstances would be justified. It is important that it is made clear to the adult at risk, and people involved with them, such as relatives (if appropriate) that in these cases there is a necessity for the police and/or local authority to investigate due to the possible risk to other adults.

No part of the data protection regulatory framework serves to prevent the responsible dissemination of relevant personal information in relation to the investigation of suspected, alleged, or actual abuse of an adult at risk.

Confidentiality

Whether or not planning a response to an adult at risk concern is through informal consultations or a formal meeting, you are likely to be sharing information that would normally be considered confidential.

Each school holds information, which in the normal course of events, is regarded as confidential and will have their own safeguards and procedures for sharing this with other related agencies. Some information will be subject to the Data Protection Act 1998.

An adult at risk concern provides sufficient grounds to warrant sharing information on a “need to know” basis and/or “in the public interest” and unnecessary delays in sharing that information should be avoided. Whenever possible the adult must be consulted about information being shared on their behalf. Often consent has been given through the usual assessment process. There will be a need to share information with other agencies for example Health, Advocacy and the Police, and generally permission would be asked before doing so.

However, in exceptional circumstances e.g. if it is considered someone is at serious risk of abuse then information may be disclosed without consent.

Where they have capacity and they are not being pressured or intimidated their agreement should be sought and their refusal respected.

If other adults are at risk the “public interest” principle may override their decision. The principles governing the sharing of information include:

- confidentiality must not be confused with secrecy
- information will only be shared on a ‘need to know basis’ when it is in the best interests of the service user(s)
- informed consent should be obtained but if it is not possible and other adults are at risk, it may be necessary to override the requirement
- it is inappropriate for agencies to give assurances of absolute confidentiality in cases where there are concerns about abuse, particularly in those situations when other adults may be at risk.

Record Keeping

The school will;

- keep clear, detailed, accurate, written records of concerns about adults at risk, (noting the date, event and action taken);
- ensure all records are kept securely, separate from the main school file, and in a locked location.

Record Transfer from Education to Adult Settings

An education setting may hold records dating back to when the young adult entered the education system. An individual decision must be made in relation to each learner as to what, if any, information needs to be transferred into the adult setting.

Staff should take into account all of the information in the previous section entitled “Consent and the Sharing of Information” when deciding what child protection records to transfer to the adult setting.

Staff should only transfer information about current and/or ongoing concerns rather than transferring whole files with historical information.

The young person's/adults views about record transfer should be sought, having regard to their capacity to give informed consent. However, failure to consent should not deter the transfer of relevant, current safeguarding information.

This Policy is to be read in conjunction with:

Whistleblowing Policy

Staff members and volunteers with serious concerns about any aspect of their work are encouraged to come forward and voice those concerns. The Whistleblowing Policy has been designed to assist, encourage and enable employees to make serious concerns known within the organisation.

Whistleblowers should know how to access support and to protect their own interests. Even if they decide that they wish to make an anonymous report, the information they provide will be taken into account and treated seriously. Further support can be found at Public Concern at Work - www.pcaw.co.uk or call for confidential advice on 020 74046609.

See the local Whistleblowing Policy at Appendix 4

Safer Working Practice

All staff and volunteers should be familiar with and adhere to the principles set out in "Guidance for Safer Working Practice for Adults who work with Children and Young People in Education Settings", 2009. This document should also be applied to work with adults at risk.

Other Linked Policies:

Health and Safety Policy

Anti-bullying Policy

Intimate Care Policy

Physical Intervention/Positive Handling Policy

Recruitment, Selection and Disciplinary Procedures

Complaints Procedure

Information sharing protocols

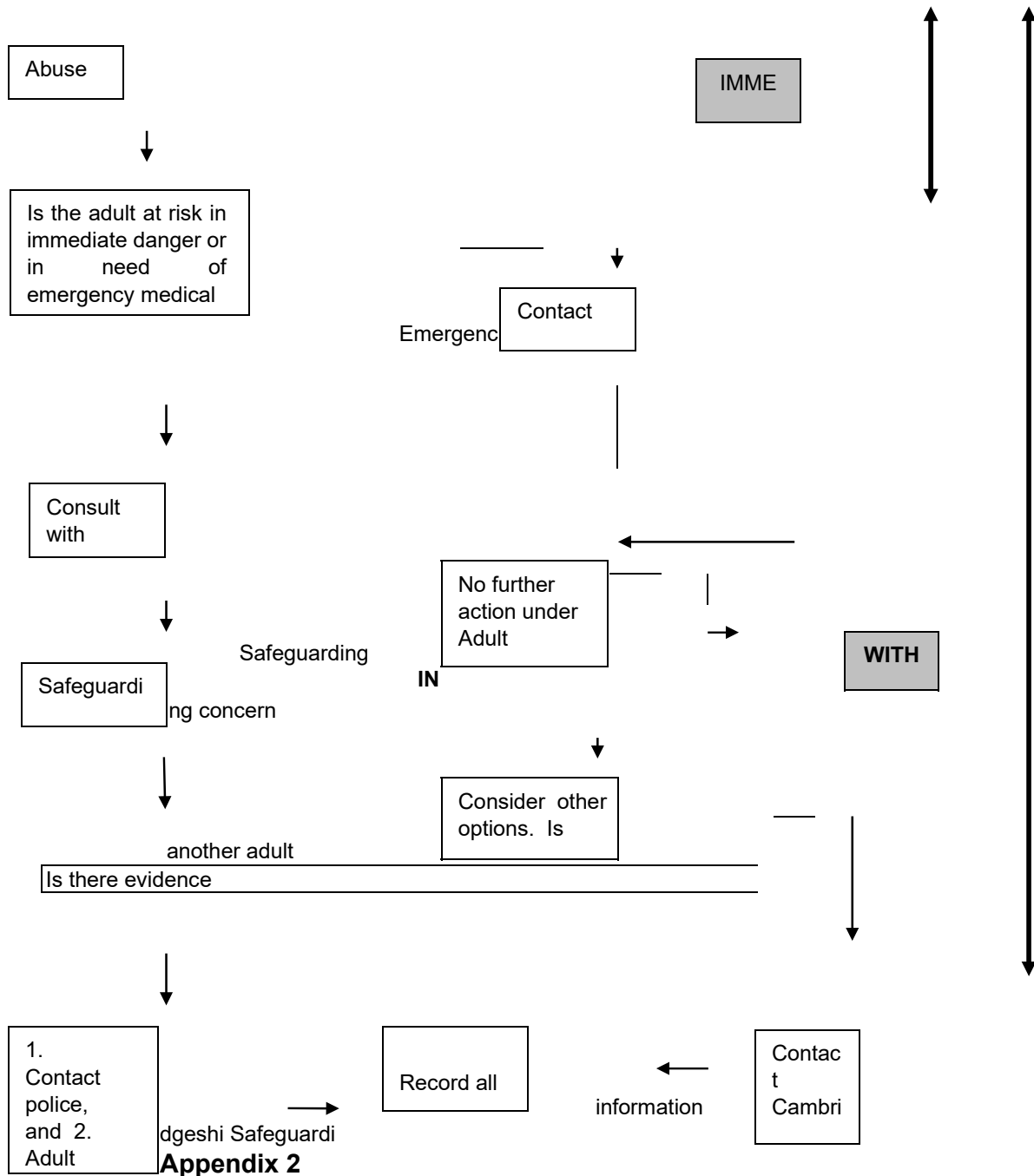
Safeguarding Adults at Risk - Model Policy & Guidance, Version 1.0 Sept 2019

Local Authority Practice Guidance

Cambridgeshire County Council's Safeguarding Adults Policy Framework can be found at:
http://www.cambridgeshire.gov.uk/info/20166/working_together/582/adult_safeguarding_policy_and_procedures

Appendix 1 Process Flowchart

Actions to be taken when first aware of a Safeguarding Adults at Risk concern. This should be read in conjunction with the Allegations Procedure (back page of the Safeguarding Child Protection Policy)



Specific Indicators of Abuse

The following list of indicators is not exhaustive and the presence of one or more of them does not confirm that abuse has happened. However, a cluster of several indicators may require attention as they could indicate an adult/young adult is at risk of abuse.

The person may:

- deny that anything is wrong,
- show an acceptance of incidents as part of their situation,
- appear to be withdrawn or agitated and anxious,
- have restricted mobility due to absence of suitable mobility aids,
- seek attention or protection, often from numerous sources,
- look to others to answer questions even when directed to them,
- have dramatic changes in their behaviour or personality, without medical explanation,
- lack support from or carers to access health care/treatment, or access to professional support and services,
- be reluctant to return home,
- lack help from family/carers to allow them to go into respite/permanent care,
- not have access to professional and other visitors, or may find that they are not able to answer for themselves or confidentially.

The person may have:

- unexplained bruising or non-accidental injuries,
- abrasions, especially around the neck, wrists and/or ankles,
- unexplained burns, especially on the back of the hands,
- hair loss in one area, or their scalp may be sore to touch,
- frequent minor accidents without seeking medical help,
- unexplained fractures,
- be malnourished,
- pressure sores and sores from lack of continence care,
- had their medication mismanaged and misused.

The person may:

- demonstrate over sexualised behaviour,
- complain of soreness in genital/anal area, without a medical cause known,
- have bruising on the inner thighs or shoulders, breasts and/or genital area,
- be pregnant or have a diagnosis of a sexually transmitted disease when it is not known that they are sexually active.

The person may:

- live in poor conditions, lack clothing, or lack of access to their own money,
- have an unexplained or sudden inability to pay bills,
- have been gifting and transferring their assets or property,
- have an unexplained or sudden withdrawal of money from their accounts,
- say their possessions of value go missing from home without satisfactory explanation,
- show a marked contrast with their previous lifestyle and standards,
- make unusual purchases unrelated to their known interests e.g. expensive make-up.

Appendix 3 Contact Details for Reporting Concerns

Cambridgeshire County Council's Safeguarding Adults Team

For information and links to our Safeguarding Adults Guidance and Procedures go to:

www.cambridgeshire.gov.uk/safeguardingmca

Helpful Organisations

Care Quality Commission (CQC): **Tel:** 03000 616161 **Email:** enquiries@cqc.org.uk

Mental Health

Cambridgeshire Independent Advocacy Service: **Tel:** 01223 218500

Older People

Action on Elder Abuse: **Tel:** 0808 808 8141 www.elderabuse.org.uk

Age UK Cambridgeshire: **Tel:** 0300 666 9860 www.ageuk.org.uk

Disabilities

Disability Cambridgeshire: **Tel:** 01480 839192 www.disability-cambridgeshire.org.uk

Disability Huntingdonshire: **Tel:** 01480 830833 www.dish.org.uk

Cam Sight: **Tel:** 01223 420033 www.camsight.org.uk

Sense East: **Tel:** 01954 267056 www.sense.org.uk

Learning Disabilities

VoiceAbility: **Tel:** 01223 555800 www.voiceability.org

Mencap: **Tel:** 0808 808 1111 www.mencap.org.uk

Domestic Abuse Information

National Domestic Violence

Free phone 24-hour helpline: **Tel:** 0808 2000 247 www.nationaldomesticviolencehelpline.org.uk

Men's Advice Line: **Tel:** 0808 8010 327 www.mensadvice.org.uk

Broken Rainbow LGBT: **Tel:** 0300 999 5428 www.brokenrainbow.org.uk

Women's Aid (9.30am to 6pm): **Tel:** 01223 460947 www.womensaid.org.uk

Safeguarding Children (learners under 18 years of age)

If a child is in immediate danger you should contact the Police/Ambulance 999

If there is no immediate danger or you need advice or information you should call:

Children's Social Care Services Tel: 0345 045 5203 (8am to 6pm - Monday to Friday)

Emergency Duty Team Tel: 01733 234724

Cambridgeshire County Council Customer
Services: 8am - 6pm Mon-Friday

9am – 1pm

Saturday

Tel: 0345 045 5202 **Fax:** 01480 498066

Email: [referral.centre-](mailto:referral.centre-@ccsc.gov.uk)

Reporting Crimes to the Police

In an emergency dial 999.

If an immediate response is not required dial 101.

The following national website enables you to find details of your local neighbourhood policing team and crime and prevention information and advice: www.police.uk

Whistleblowing

Public Concern at Work (PCaW)

For independent advice and support on public interest whistleblowing.

Tel: 020 7404 6609 **Email:** whistle@pcaw.co.uk



Whistleblowing

Have you seen or heard something at work that worried you?

If you can't tell your manager, tell us your concerns about:

- ◆ the standards, procedures or practices within the Council
- ◆ the actual or potential harmful treatment of service users, particularly children, young people and vulnerable adults
- ◆ the behaviour of other employees or managers
- ◆ the conduct of a contractor or partner organisation
- ◆ any potential health and safety risks
- ◆ any practice you think breaks the law

If you genuinely believe something may be wrong, even if you're not absolutely sure, we want to know...

In the first instance, please raise the issue with your Headteacher or the nominated contact in your school's Whistleblowing Policy if you can. If you feel you can't do that, please contact any of the people named below in confidence:

Joyce Fenton, Strategic HR Business Partner
(Children and Young People's Services)
01223 699232

Jo Pallet, Education Officer
01223 703562

Elaine Hammond, HR Manager (Children and Young People's Services)
01223 699066

Sara Rogers, Education Child Protection Manager
01223 729045

Steve Tinkler, Head of Audit and Risk Management
01223 699144

Chris Young, Occupational Health and Safety Manager
01223 699253

Quentin Baker, LGSS Director of Legal Services
(the Council's Monitoring Officer)
01223 699253

Full details of the County Council's Whistleblowing Policy can be viewed on our internet pages at www.cambridgeshire.gov.uk



Appendix 5

The Safeguarding of Vulnerable Adults (SoVA) Policy for small groups who may have irregular or limited contact with Vulnerable Adults

Policy

The aim of this policy is to ensure the safety of vulnerable adults accessing Cambridge Meridian Academies Trust provision

When working with vulnerable adults each college will ensure that they will:

- Promote their health and welfare.
- Respect and promote their rights.
- Work in a way which safeguards the wellbeing of the vulnerable person and protect them from harm and abuse.
- Take appropriate steps if they became aware of any signs / incidents of harm and abuse.
- The college will ensure group members and volunteers are not expected to be alone or left unsupervised with vulnerable adults or to attend to their personal care needs.

Policy Aims

- To promote good practice and ensure that volunteers are able to work in an environment where there is irregular and low intensity contact with vulnerable adults with confidence.
- To provide vulnerable adults with appropriate safety and protection whilst in the company of participating volunteers.
- To allow volunteers to make informed and confident responses to specific Adult Safeguarding issues.
- Monitor the level of contact with vulnerable adults to ensure that the contact is infrequent and of low intensity and below the threshold of DBS check requirements.
- To ensure that vulnerable adults and their carers (if appropriate) are aware of what to do if they have a concern and that they would feel confident to pass their concern on.

Terms used

- A **Vulnerable Adult** is defined in No Secrets¹ 'as a person aged 18 years or over "Who is or maybe in need of community care services by means of mental or other disability, age or illness' and 'Who is or maybe unable to take care of him or herself or unable to protect him or herself against significant harm or exploitation
- **Regulated Activity** are the activities that the Disclosure and Barring Service can bar people from doing. It is a criminal offence for a barred person to seek to work, or work in, activities from

¹ Department of Health (2000) No Secrets: Guidance on implementing multi-agency policies and procedures to protect vulnerable adults from abuse.

which they are barred. It is also a criminal offence for employers or voluntary organisations to knowingly employ a barred person in regulated activity.

- **Infrequent Contact** is classed in Cambridgeshire's 'The Safeguarding of Vulnerable Adults (SoVA) Introductory notes for voluntary & community groups' as occasional, irregular or short term contact over a period of time. It is also unlikely that the organisation core aims are to provide activities to children, young people or vulnerable adults.
- **Low intensity** is contact within a group context, in a public space – taking part in an activity with minimal physical contact, not providing intimate care or being left alone with the person. It is also highly likely that parents or guardians are present.

The named person responsible for this policy is J Parris

They will:

- Ensure that the welfare of vulnerable adults is given the highest priority by the organisation, its management and volunteers
- Promote good practice and ensure that volunteers are able to work with vulnerable adults with confidence
- Ensure that this Practice Guidance and Procedures is enacted and monitored including the briefing, training and gathering feedback from volunteers
- Monitor contact with vulnerable adults to ensure that the frequency and intensity of contact is consistent with the DBS threshold levels.
- Act as the main contact for disclosing information around adult safeguarding concerns
- Ensure that the concerns of vulnerable adults are heard and acted upon
- Be responsible for reporting incidents or concerns to appropriate authorities
- Attend appropriate training relevant to the level of engagement with vulnerable adults to ensure all staff/volunteers remain up to date with current practice and legislation
- Ensure volunteers have access to further appropriate information
- Where appropriate, sign up to Cambridgeshire County Council's Adult Safeguarding Policy Guidance and Procedures

Signature of chair:

Date of signature/ratification of policy (or what date was this policy adopted by the committee)

Date that next review is due:
Date policy reviewed:

Date that next review is due:
Date policy reviewed:

Safeguarding of Vulnerable Adults (SOVA) – practice guide

<p>What is SoVA?</p>	<ul style="list-style-type: none"> • Abuse of vulnerable adults is common, hidden (by both the victim and the alleged perpetrator). The most likely perpetrator is a care-giver or someone else close to the victim. • Everyone working as a volunteer or a paid member of staff has an important role to play in protecting vulnerable adults. This includes recognising, recording, reporting and referring concerns about abuse. • Concerns may be recognised by anyone working with or knowing the vulnerable adult. This includes all health professions, care staff (care home or community), volunteers, members of the public, friends and family or by the adult themselves. • It is vital to listen and to take concerns seriously. <p>Vulnerable adult: A vulnerable adult may be anyone over the age of 18, who has a physical or sensory impairment, learning disability or a mental health problem and who may be unable to protect themselves from harm or abuse. Many frail or confused older people are especially vulnerable. Risk increases if socially isolated, history of family violence, communication problems, drugs or alcohol involved, relationships under stress, poor staffing levels and poor staff training. Most occurrences are in own home or care facility but can be in hospital or any other setting.</p> <p>Abuse – may be single or repeated. It may be: physical: sexual: psychological: financial or material: neglect or acts of omission: discriminatory (race, ageism etc): institutional: domestic abuse and violence. The Four Principles</p> <p>For an incident or allegation to be considered as a safeguarding referral, these ‘Four Principles’ need to be met:</p> <ol style="list-style-type: none"> 1. The person is a vulnerable adult as defined as someone aged 18 years or over, who meets the criteria for a community care service 2. There is an alleged perpetrator – a third party/person/agency/unknown 3. There is abusive behaviour by the alleged perpetrator There is harm, or a risk of harm to the vulnerable adult
<p>Why do we need to do this?</p>	<p>The NHS has reported 96,000 cases of alleged abuse against vulnerable adults were reported in England last year. Most incidences of abuse are not reported – there were 944 in Cambridgeshire in 2012. The numbers increase year on year, this is mostly due to increased recognition and referral but is still only the tip of the iceberg.</p>
<p>How do we need to</p>	<p>Recognise: Know what to look for; get trained to recognise the signs and symptoms and listen to concerns of those working with vulnerable adults.</p>

respond?	<p>Record: Record concerns clearly.</p> <p>Report: Know where to get help and who to talk to – develop an in-house protocol, nominate a Safeguarding Adults Champion, preferably someone with additional knowledge and training.</p> <p>Refer: Know where to refer and what to do to get more help; keep a note of contact details of Cambridgeshire Direct.</p> <p>Remember: this is a common problem, but is hidden by both the victim (fear of reprisals) and the perpetrator (and the most likely perpetrator is someone caring for the patient).</p>
----------	---------------------------------------------------------------------------------------------------------------------------------------------------------------------------------------------------------------------------------------------------------------------------------------------------------------------------------------------------------------------------------------------------------------------------------------------------------------------------------------------------------------------------------------------------------------------------------------

Top Tips: Safeguarding of Vulnerable Adults (SOVA) – good practice procedure

What is SoVA?	<ul style="list-style-type: none"> • Abuse of vulnerable adults is common, hidden (by both the victim and the alleged perpetrator). The most likely perpetrator is a care-giver or someone else close to the victim. • Everyone working as a volunteer or a paid member of staff has an important role to play in protecting vulnerable adults. This includes recognising, recording, reporting and referring concerns about abuse. • Concerns may be recognised by anyone working with or knowing the vulnerable adult. This includes all health professions, care staff (care home or community), volunteers, members of the public, friends and family or by the adult themselves. • It is vital to listen and to take concerns seriously. <p>Vulnerable adult: A vulnerable adult may be anyone over the age of 18, who has a physical or sensory impairment, learning disability or a mental health problem and who may be unable to protect themselves from harm or abuse. Many frail or confused older people are especially vulnerable. Risk increases if socially isolated, history of family violence, communication problems, drugs or alcohol involved, relationships under stress, poor staffing levels and poor staff training. Most occurrences are in own home or care facility but can be in hospital or any other setting.</p> <p>Abuse – may be single or repeated. It may be: physical: sexual: psychological: financial or material: neglect or acts of omission: discriminatory (race, ageism etc): institutional: domestic abuse and violence. The Four Principles</p> <p>For an incident or allegation to be considered as a safeguarding referral, these ‘Four Principles’ need to be met:</p> <ol style="list-style-type: none"> 4. The person is a vulnerable adult as defined as someone aged 18 years or over, who meets the criteria for a community care service 5. There is an alleged perpetrator – a third party/person/agency/unknown 6. There is abusive behaviour by the alleged perpetrator There is harm, or a risk of harm to the vulnerable adult
Why do we need to do this?	<p>The NHS has reported 96,000 cases of alleged abuse against vulnerable adults were reported in England last year. Most incidences of abuse are not reported – there were 944 in Cambridgeshire in 2012. The numbers increase year on year, this is mostly due to increased recognition and referral but is still only the tip of the iceberg.</p>
How do we need to	<p>Recognise: Know what to look for; get trained to recognise the signs and symptoms and listen to concerns of those working with vulnerable adults.</p>

respond?

Record: Record concerns clearly.

Report: Know where to get help and who to talk to – develop an in-house protocol, nominate a Safeguarding Adults Champion, preferably someone with additional knowledge and training.

Refer: Know where to refer and what to do to get more help; keep a note of contact details of Cambridgeshire Direct.

Remember: this is a common problem, but is hidden by both the victim (fear of reprisals) and the perpetrator (and the most likely perpetrator is someone caring for the patient).

Make a **clear entry** in notes of concern raised and actions taken.

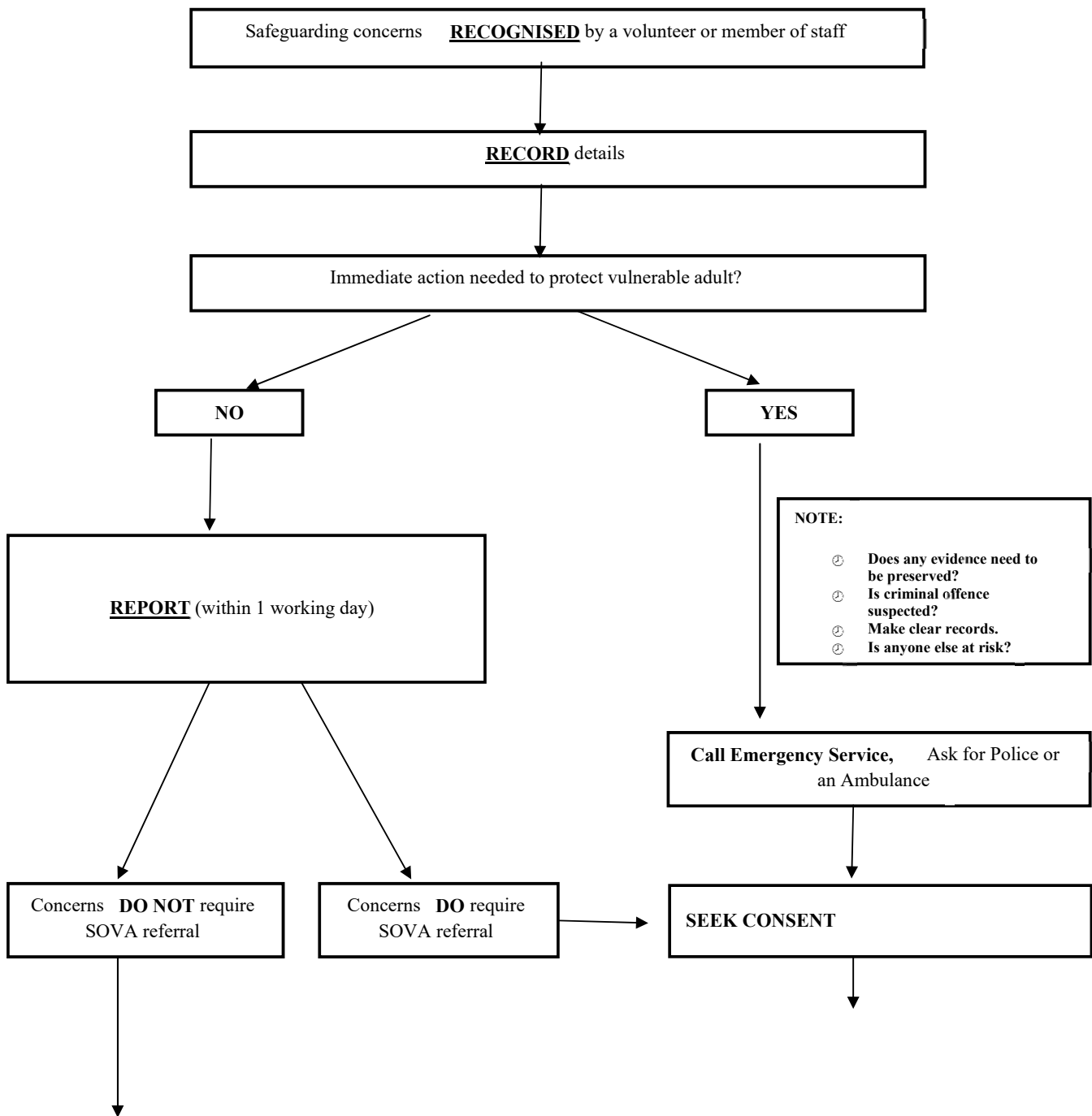
REFER to Cambridgeshire Direct (ASAP within 24hrs)

(Tell call handler this is a SOVA referral)

Tel: **0345 045 5202** 9am-5pm Monday to Thursday and
9-4 on Fridays Fax: 01480 498066

referral.centreadults@cambridgeshire.gov.uk

Outside these hours, if it is an emergency call
01733 234724 or Cambridgeshire Constabulary **101**



Seek advice at any stage from:
Cambridgeshire Direct 0345 045 5202
Outside these hours, if it is an emergency call 01733 234724 or
Cambridgeshire Constabulary 101