



ELY COLLEGE

College Prospectus

2026 - 2027



Contents

Welcome from the Principal.....Page 3

The Academy Trust.....Page 4

The Meridian Trust Family.....Page 6

Our Expectations.....Page 7

The College Identity.....Page 8

Teaching and Learning Standards.....Page 9

House System.....Page 10

Vertical Tutoring.....Page 11

The Year 7 Experience.....Page 13

College PLEDGES.....Page 15

Session 6.....Page 16

Enrichment Opportunities.....Page 17

The Curriculum.....Page 18

Valued Member of the Community.....Page 21



Welcome to Ely College

I am very proud of this college and it is a tremendous privilege to be its Principal. Ely College has a simple vision of being an exceptional college of which the whole of the Ely community can be proud. I am thrilled that you are exploring the possibility of joining our community for September 2026.






Since joining the Meridian Trust in July 2016, the college has gone from strength to strength. In 2018 we were named ‘Secondary School of the Year’ by the Cambridge Evening News Education Awards and in July 2019, we were delighted that Ofsted judged us to be ‘Good’ with ‘Outstanding leadership and management’. We are proud to have built further on these successes with the superb examination results that our students in Year 11 and 13 were able to achieve and our oversubscribed Year 7 intake over the past few years.

Ofsted revisited us in March of 2025 and carried out an “ungraded inspection”. We were delighted to share that the report found “the school’s work may have improved significantly across all areas since the previous inspection”. This is one of four possible outcomes for an ungraded inspection. This outcome means “if a graded inspection took place: at least one key or provision judgement would be higher; none would be lower; all would be outstanding.”

Our sixth form at Bishop Laney continues to grow. We have welcomed 300 students to our brand-new refurbished sixth form centre in the Needhams Tower in September 2025. Last year 95% of students were successful in gaining their first-choice university and several of our students were able to secure degree level apprenticeships and their first steps in employment.

Our Year 11 students performed exceptionally well in a wide range of subjects for their examinations. 73% of our Year 11 students gained at least a grade 4 in English and Maths with 53% of students gaining a strong pass of grade 5 and above. Our latest Progress 8 data shows students gained a score of +0.64 which placed us in the top 18% of state schools across the Country. These scores indicate that our students are making excellent progress against their target grades. Several of our students achieved more than 7 grade 9s in their exams and some students made as much as two grades progress on most of their subjects. You can be confident that the quality of teaching and learning here is excellent.

The college is supported by the village college ethos and the values of Meridian Trust, described by Ofsted as: ‘an absolute belief that every child matters’. The core of this philosophy is:

- **Achievement for all**
- **Providing a high quality learning environment**
- **Valuing people**
- **The pursuit of excellence**
- **Extending the boundaries of learning**

We expect students to work hard and develop resilience when faced with challenges. Together we will celebrate the achievements of our students, whatever their level of ability. We know that learning is at its best when staff, students and parents work closely together, so on behalf of our staff may I say that we look forward to meeting with you and seeing you at as many college events as possible.

This prospectus provides a useful summary of how we translate these aims into reality for each student. We hope that you will be inspired to join us in the pursuit of our aims of knowing and supporting every student to achieve and enjoy their school experience.

Simon Warburton



The Pursuit of Excellence



The Academy Trust

Ely College is proud to be a member of the Meridian Trust. Our family of schools continues to grow in the region, allowing for strong networks and links to flourish between staff and students across primary, secondary and special schools. This allows for close collaboration between teachers and allows us to share resources, expertise and best practice easily.

"Trustees and governors know the school exceptionally well and provide an equal balance of support and holding leaders effectively to account."

Ofsted, March 2025

The Trust was formed with a simple and clear vision: 'to ensure high quality education at the heart of the community.' It also enabled Swavesey Village College, considered to be 'outstanding in every respect' by Ofsted, to sponsor other academies, and help spread the best education practice.

The Trust truly values the success of every child and places the sharing of excellent education practice at its core. It is committed to improving the quality of education and life in all of the communities it serves. The Trust is dedicated to maintaining its core principles and focus as it grows.



Valuing People



A high quality learning environment



Achievement for all



The pursuit of excellence



Extending the boundaries of learning

- | | |
|--|---|
| <ul style="list-style-type: none">▶ Appreciating the incredible trust placed with us in educating young people and serving our community▶ Valuing the diversity and qualities of our staff and students | <ul style="list-style-type: none">▶ Ensuring that all students and staff feel known, appreciated and supported▶ Committing whole-heartedly to collaboration within, between and beyond our academies |
| <ul style="list-style-type: none">▶ Providing high quality buildings, engaging classrooms and excellent sporting facilities▶ Delivering innovative learning resources and materials | <ul style="list-style-type: none">▶ Ensuring a well-disciplined and caring environment▶ Exploiting cutting edge technologies to expand the opportunities for students, staff and our community to benefit from learning in a digital age |
| <ul style="list-style-type: none">▶ Ensuring that every student achieves their maximum potential▶ Maintaining a relentless sense of optimism | <ul style="list-style-type: none">▶ Removing barriers to learning▶ Providing a whole education: academic excellence co-existing with an exceptional commitment to activity beyond |
| <ul style="list-style-type: none">▶ By expecting this of every person, every day▶ Continually striving for the creation of a true meritocracy | <ul style="list-style-type: none">▶ Promoting and celebrating elite performance inside school and in the wider world▶ Rejecting outright any sense of complacency |
| <ul style="list-style-type: none">▶ Providing positive memorable experiences inside and outside of the classroom▶ Providing a diversity of experience to all | <ul style="list-style-type: none">▶ Opening up the world to all students▶ Securing the very best future educational and vocational experiences for our students |

For more information, visit our Trust website: www.meridiantrust.co.uk

The Meridian Family

Meridian Trust is a successful multi-academy trust founded on its commitment to people and communities.

We have extended our reach further into Bedfordshire and Peterborough, with the likes of The Ferrers School, Lincroft Academy, Sharnbrooke Academy, Stratton Upper and various primaries joining the Meridian family. The DfE has shown a confidence in the Trust, as we continue to support a range of Secondary, Post-16 and Special Schools in the local region.

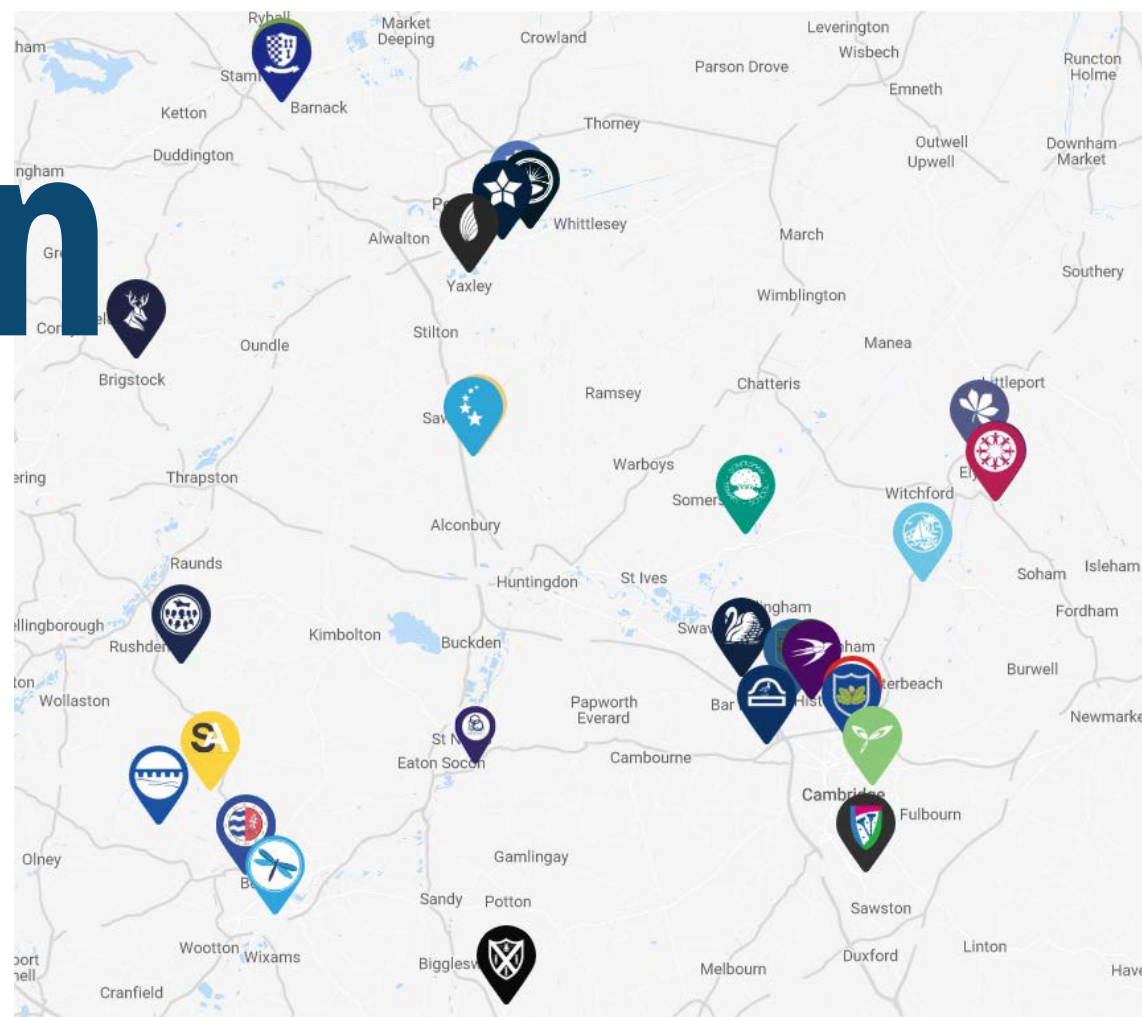
Every child is known, equally valued and supported to achieve their potential in all our academies.

Every community we serve benefits from the facilities and services we provide.

Our staff benefit from strong networks, excellent career opportunities and a human approach.



Bishop Laney Sixth Form is our on site Sixth Form provision which provides a thriving centre of academic and professional 16-19 excellence. Offering a suite of A levels and Technical courses, it is their emphasis on high standards in all that they do, that has seen the centre grow significantly over the last few years, both in numbers of students and in their achievements.



Two of our local feeder primaries brought into the Meridian Trust family in recent years. **Downham Feoffees** became the third primary to join in September 2017 with the **Lantern Community** primary following in June 2018.



Lantern Community Primary School

Every child has a rich educational experience

We seek to ensure that every student feels safe, supported and excited by learning. Alongside high quality teaching, our rich curriculum and personal support, it is the daily routines, expectations and standards that create the conditions for success.

CORRIDOR EXPECTATIONS

- WALK! DON'T RUN
- KEEP TO THE LEFT
- RESPECT YOUR ENVIRONMENT
- NO COATS ON INDOORS
- DO NOT DROP LITTER
- NO MOBILE PHONES OR EARPHONES
- RESPECTFUL LANGUAGE AT A QUIET VOLUME

CLASSROOM EXPECTATIONS

- BE SMART
- SHOW RESPECT TO OTHERS
- BE PUNCTUAL
- DO YOUR HOMEWORK
- BEHAVE POSITIVELY
- BE READY TO LEARN
- BE YOUR BEST

MOBILE PHONE EXPECTATIONS

- Phones are allowed until 8.25am and after school at 3pm
- NO MOBILE PHONES OR EARPHONES SHOULD BE VISIBLE DURING THE COLLEGE DAY
- If you need to use you phone during the college day for an **emergency** please contact the House office.
- Mobile phones during lesson time is at the discretion of the class teacher. This will be for learning purposes **ONLY**.



We make no apology for the high expectations set out in our policies relating to:

- » Attendance and behaviour
- » Daily academy routines
- » Celebrating achievement

Our students should be ready, respectful and safe in everything they do.

'All students are expected to wear full and correct school uniform. Arriving at school well-presented and in uniform is seen as an indication that students are ready to

work hard and achieve the high standards that we expect of them.'

A comprehensive breakdown of our expectations can be found on our website: www.elycollege.com

"The behaviour of many pupils is exemplary. They are polite and respectful."
Ofsted, March 2025

Our Expectations

The College Identity

Uniform

Community consultation is at the forefront of our uniform policy. We reviewed our uniform last year following student and community feedback, creating opportunities for personal expression as well as clarity on skirts and summer uniform. The one style 'Ely College skirt' was introduced, as well as shorts for all students and non-gendered jackets. Listening to our student feedback and the wider community has been a really positive experience that has ensured we settle into a new academic year with ease.

All students should wear plain black full length tailored trousers OR tailored style black knee length shorts OR the one-style 'Ely College' black knee length skirt. These options are worn with a collared white shirt, a grey jacket with piping and school logo, a House tie and black sensible shoes, suitable for a professional office environment.

The PE uniform includes a House PE top and plain black PE shorts, so students can participate in sport with the pride of their House. Our suppliers also offers the optional addition of a black PE fleece and black sports trousers, both with piping. We currently ask that all students come prepared with additional 'wet weather' kit that should include a plain waterproof jacket, and a plain warm jumper.

Items specific to the college (grey jacket with piping and logo, the one-style 'Ely College' skirt, House tie, House PE top and the optional items of black sports trouser and black fleece, both with piping) can be purchased from our designated supplier, Price and Buckland. Orders for Price and Buckland can be placed on their online shop, accessed through the Ely College website. Paul Days of Ely also supply our full uniform range and offer a fitting service.

The white shirt, black trouser or shorts, black PE shorts and wet weather kit can be bought from any high-street retailer.

For more information, please visit www.elycollege.com/uniform



Inspiring learners

We are very proud of our staff at Ely College, who through their commitment and passion for Teaching & Learning, ensure that every child is given the support, guidance and opportunities **to be the best they can be.**

The Ely Expects Framework is our aspirational Teaching and Learning standard which focuses on 5 main areas:

Pride, Challenge, Knowledge, Dialogue and Standards.

Together we work hard to ensure that our knowledge, resources and practice in these five areas is of the highest standard, using the expertise within our Academy to support all teaching staff.

These shared teaching values ensures we challenge and support students to reach our high expectations, as well as inspiring trainees and new teachers into the profession to be the best they can be.

Teaching & Learning is at the forefront of everything we do at Ely College and we are committed to continually improving how we teach and how our students learn to ensure outstanding success.

"Pupils achieve highly and are well prepared for the next steps in their education, employment or training."

Ofsted, March 2025



ELY EXPECTS

Our shared teaching values

PRIDE

- We are **enthusiastic advocates** for our students, our subjects, and Ely College
- The learning environment is **inspiring** and supports student progress
- We foster a culture where **learning is valued** and students are proud of their achievements
- Praise is given **generously, frequently and genuinely**

CHALLENGE

- High expectations** for all students are shared and relentlessly applied
- Our curriculum is **ambitious**, inspiring and carefully sequenced
- Explicit instruction and clear modelling are key elements of **quality-first teaching**
- We carefully tailor the **support and stretch** for each student to ensure equity

KNOWLEDGE

- Mistakes and misconceptions** are welcomed and used to deepen understanding
- Student responses lead to reflective and **adaptive teaching**
- Reading and **key vocabulary** are actively taught and embedded in our subjects
- We pursue **mastery** through reflection, professional learning and collaboration

DIALOGUE

- Student **oracy** is actively developed through planned **high-quality talk**
- Explanations and questioning** are clear, considered and strategically applied
- Feedback** provides precise and specific guidance to **'close the gap'**
- We ensure **students** understand their **curriculum**, progress and outcomes

STANDARDS

- Lessons and homework are **planned** to ensure progress against clear **learning outcomes**
- Routines and expectations** are explicit, clear and consistently applied
- Seating and grouping** are utilised as tools to support learning
- Interactions with students and colleagues demonstrate **mutual respect**, care and kindness

ELY COLLEGE

- We value and continuously promote:**
- ▶ High expectations
 - ▶ Achievement for all
 - ▶ High quality teaching every day
 - ▶ Inspiring learning environments
 - ▶ Literacy and numeracy throughout the curriculum
 - ▶ Independent learning/home learning
 - ▶ Continued professional development for all our staff
 - ▶ Positive learning behaviours

Valuing People

Ely College embeds the Meridian Trust's core values at the heart of everything we do. These initiatives have been developed and proved to be successful at other schools in the Trust.

Our House system is at the heart of our commitment to ensure that **'Every child is known, valued and supported'**. This system ensures that parents and families feel supported through every stage of their child's education.

House System

Ely College has six main school Houses:

The Houses provide crucial support and guidance, and the needs of every student are acknowledged and understood by their tutor and senior tutor. The system enables individual progress to be monitored much more closely and the House is the key focus of the relationship between the college and families, with siblings joining the same House.

The House offices are a great base for students and parents to find the support and advice they may need. Each House has a dedicated member of the leadership team, a Senior Tutor and a Student Support Assistant (SSA).

In 2021 and 2025 we established Seacole and Equiano, our fifth and sixth House, as a result of our growth and student numbers. We included students, staff and wider community in this important process and look forward to building on its success.



Scott



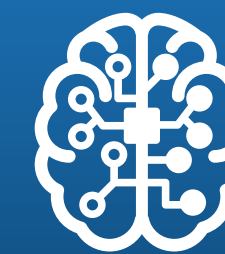
Equiano



Etheldreda



Franklin



Turing



Seacole



Vertical Tutoring

The mixed aged tutor group system is known as Vertical Tutoring. Each tutor group will have a mixture of students from Years 7-11. The Vertical Tutoring system has many benefits, fostering a family spirit where older students offer guidance and provide support to younger students. It also ensures students have a sense of the whole school picture as the younger students see the older ones preparing for work experience, subject choices and important examinations.

The tutors will follow the students from their first few days to their last at the college. This allows them to easily build great relationships

with students and their families and ensure they receive the support they need. Each tutor will make regular contact with a child's family in the year to discuss progress and address any concerns.

An encouraging House ethos for students to strive in is developed and strengthened by healthy competition. Students will have the opportunity to compete alongside their House peers in a variety of activities in order to claim victory and win the prestigious House Cup.

KEY DATES FOR THE FIRST TWO TERMS

3RD WEEK IN JUNE:

Primary Evening – families meet the tutors and House team members individually.

2ND WEEK IN JULY:

Primary Taster Days – students are introduced in to their new House and take part in activities across their subjects.

2ND WEEK IN SEPT:

Tutor calls home, not only to celebrate the successful first week of secondary school, but also to make sure that we are aware of any concerns or issues that may have arisen.

SEPTEMBER:

Year 7 Tutor Evening where parents are invited to attend a 15 min meeting with their child's form tutor. This provides parents with the opportunity to discuss how their child has settled into Ely College and ask any questions they may have.

JANUARY:

Parents' Evening to further cement the home / school partnership and to celebrate the continuing, smooth transition.

These represent the minimum extent of contact you should expect from us during this important transition period. Situations can arise where more support and contact may be necessary and we aim to ensure that you feel that communication is easy, valued and effective from the very start of your partnership with us.

A high quality learning environment

The Year 7 Experience

Once students are allocated a place at Ely College, our main aim is to get to know each individual student as soon as we can through regular, personal contact. The timeline shown here is an outline of the key dates which form part of our Year 7 transition process. The transition process starts for students during their taster day experience in Year 6 and continues throughout their first year at Ely College.

The relationship between college, student and parents is fundamental to a successful start to secondary school and our House system is the best platform to achieve this. Should situations arise where a student may need more support, we promise communication will be easy, valued and effective from the very start of your partnership with us.

Our commitment to transition starts early, with many activities planned, organised and supported by Ely College's staff and students throughout the course of the academic year with our partner primary schools.

This is crucial because it allows the primary students to familiarise themselves with the college, its values and its culture before arriving in September.

"The schools broad and rich curriculum is well considered. It is ambitious and challenging for all pupils." Ofsted, March 2025



Achievement for all



College PLEDGES

We have an uncompromising commitment to ensure that every child achieves their academic potential at Ely College. Our curriculum has been carefully designed to secure the best possible outcomes for our students. We also have support systems in place for students that need extra support and guidance to achieve.

In order to support our challenging curriculum, we have also developed and invested in a simple but broad set of college PLEDGES that students are expected to complete during the course of their time at the college, at Bronze, Silver and Gold levels. In 2024 we introduced an elite Platinum PLEDGE award.

PLEDGES are an awards system which encourages students to tackle a range of character-building opportunities that enhance their learning and development. It is an expectation of every student to complete their PLEDGES during their time at the college.

The PLEDGES system aims to encourage and support many important qualities in students that employers value, such as responsibility, expectation, intuition and citizenship, all of which are crucial for giving students skills and brighter futures.

Did you know?

- ▶ *Completing PLEDGES can also help your House to win the House Cup at the end of the academic year*



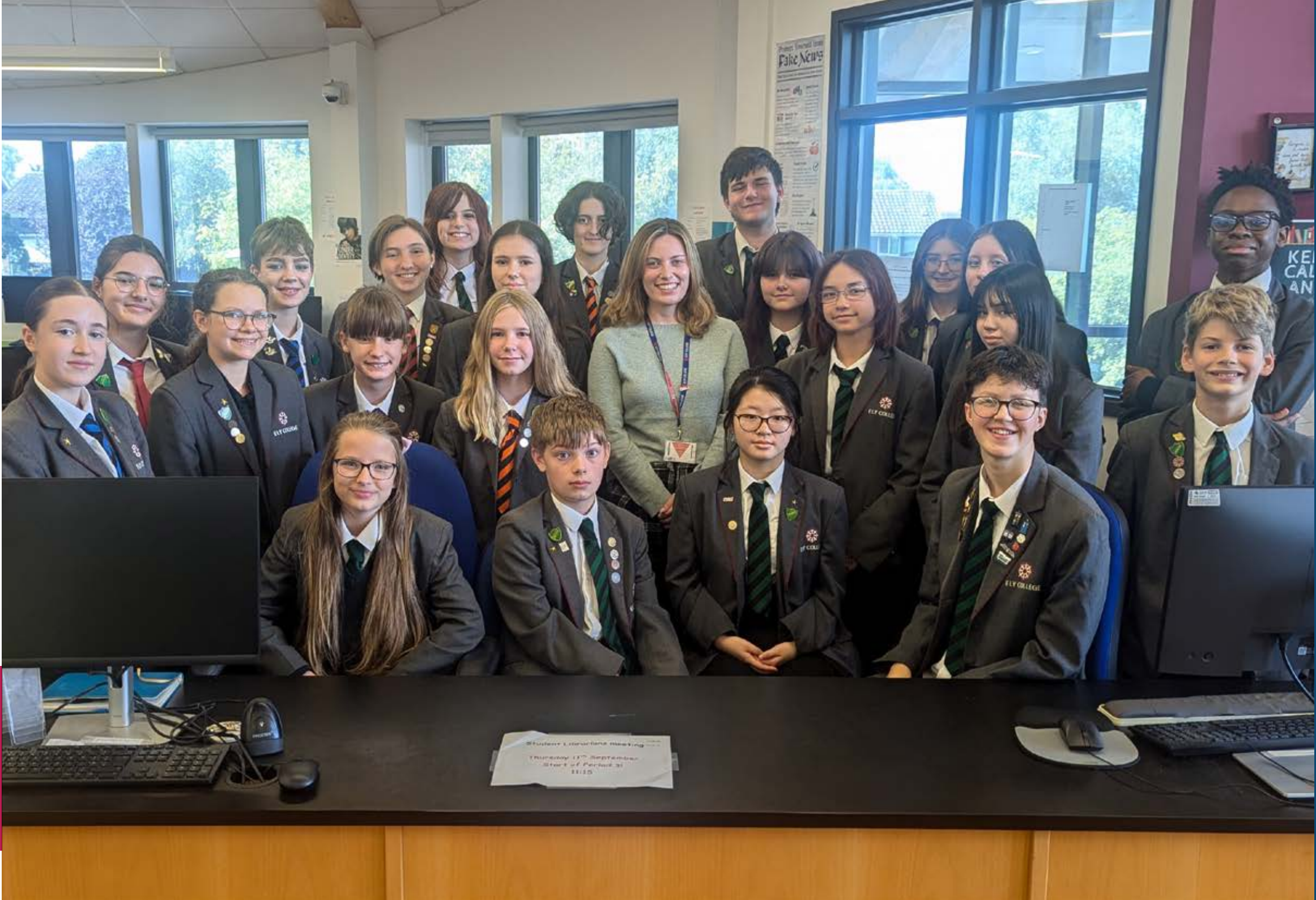
Session 6

We offer a wide variety of extra-curricular opportunities through a timetabled programme over the year. These encompass activities such as sports, film making, music and additional subject support.

The college day extends to 4.15pm for those students who wish to stay for after-school activities or additional curriculum assistance – these sessions are called Session 6’s. We provide transport to the local villages to allow students to get home; this is booked each day via the LRC.

Session 6 can also be important in ensuring that students receive additional support to develop understanding and confidence at all ranges of abilities. Teachers will recommend sessions that will be useful if a student needs additional support or clarification. Students can also drop into extra-curricular sessions themselves if they are feeling overwhelmed or need assistance.

***Did you know?** Attending Session 6s can help you work towards your PLEDGES*



Enrichment Opportunities

We believe in an all-inclusive education where every student not only develops academic skills, but self-confidence, life-skills, and leadership experiences.

In addition to the enrichment programme, there are a wide-range of other whole college community events:

- ▶ Inter-House competitions
- ▶ Extended curriculum days
- ▶ Charity events

There are student leadership opportunities to be found throughout all aspects of college life – from the informal leadership that is inherent in the mixed age tutor groups, through to the college House Captains, and local and national representative groups.

Session 6 and lunchtime activities have included:

- | | |
|-----------------------------------|-----------------------------|
| ▶ Archaeology Club | ▶ Charity Committees |
| ▶ Engineering Club | ▶ Chess Club |
| ▶ Debating Club | ▶ Spanish (Key Stage 4) |
| ▶ Computing Club | ▶ Science Club |
| ▶ Schools Shakespeare Competition | ▶ Creative Writing |
| ▶ Sewing Bee | ▶ Games and Enrichment Club |
| ▶ Reading Group / Reading Aloud | ▶ French Club |
| ▶ Knitting and Crochet | ▶ Student Librarians |

Music groups / ensembles have included:

- | | |
|-----------------------|-------------------------|
| ▶ Gypsy Jazz Ensemble | ▶ Jazz Ensemble / Combo |
| ▶ Choir | ▶ String Ensemble |
| ▶ Brass Ensemble | ▶ Flute Choir |

Sports clubs and opportunities have included:

- | | |
|--------------|--------------------|
| ▶ Rugby | ▶ Ultimate Frisbee |
| ▶ Netball | ▶ Football |
| ▶ Basketball | ▶ Dodgeball |

Extending the boundaries of learning

The students are at the heart of the educational process and must be encouraged to participate fully in the life of the college. Contributions and ideas from all students will be valued and listened to. We believe that all students, regardless of their age, gender, ability and background should experience personal fulfilment through the 'entitlement curriculum'.

It is essential to recognise that education is an 'on-going' process and students receive only a section of their education at this college. The curriculum of the college must be continuously evolving, forward looking and under constant review. The college will ensure that its statutory duties regarding the curriculum are carried out.

Curriculum Structure: Key Stage 3 (KS3)

Students in Years 7 and 8 (Key Stage 3) currently study the following subjects:

- ▶ English
- ▶ Mathematics
- ▶ ICT
- ▶ Physical Education
- ▶ Science
- ▶ Creative Arts (Art, Drama, Dance, Music)
- ▶ Humanities (Geography, History, and Religious Education)
- ▶ Modern Foreign Languages (French or Spanish)
- ▶ Design and Technology
- ▶ Personal Development, Careers Information, Advice and Guidance



Curriculum Structure: Key Stage 4 (KS4)

All students in KS4 work towards external examinations in all subjects with the exception of Physical Education. Students in Years 9 to 11 have some degree of choice but all students will study:

- ▶ English
- ▶ Mathematics
- ▶ Science
- ▶ Physical Education
- ▶ Humanities (History, Geography)
- ▶ Core studies which includes Religious Education, Personal Development, Careers Information, Advice & Guidance

There will also be a number of guided choices designed to give a good range of choices and sound careers and further education progression. Students can choose from subjects such as:

- ▶ Creative & Performing Arts (Art, Drama, Media Studies, Music)
- ▶ Humanities (Business Studies, Religious Education, Child Development, Health and Social Care)
- ▶ Physical Education
- ▶ Modern Foreign Languages (French or Spanish)
- ▶ Design and Technology (Product Design or Fashion and Textiles)
- ▶ Computer Science
- ▶ Sport
- ▶ Hospitality and Catering
- ▶ Hair and Beauty



Curriculum Structure: Key Stage 5 (KS5)

Bishop Laney Sixth Form is based at Ely College. At Bishop Laney we offer a range of highly regarded A Level, Technical and Professional courses.

All students engage in a planned programme of extra-curricular and work related learning. The subjects currently offered are:

A Level:

- ▶ English Lang & Lit
- ▶ English Literature
- ▶ Mathematics
- ▶ Further Maths
- ▶ Computer Science
- ▶ Chemistry
- ▶ Physics
- ▶ Biology
- ▶ Drama
- ▶ Music
- ▶ Music Technology
- ▶ Product Design
- ▶ Fashion & Textiles
- ▶ Fine Art
- ▶ Photography
- ▶ History
- ▶ Geography
- ▶ Business
- ▶ Philosophy & Ethics
- ▶ Psychology
- ▶ Sociology

- ▶ EPQ: Extended Project Qualification

Technical:

- ▶ Accounting
- ▶ Applied Science
- ▶ Barbering
- ▶ Beauty Therapies
- ▶ Business
- ▶ Business Admin.
- ▶ Catering & Prof. Cookery
- ▶ Criminology
- ▶ Hairdressing
- ▶ Digital Media & Production
- ▶ Exercise & Sport Science
- ▶ Sports Coaching
- ▶ Health & Social Care

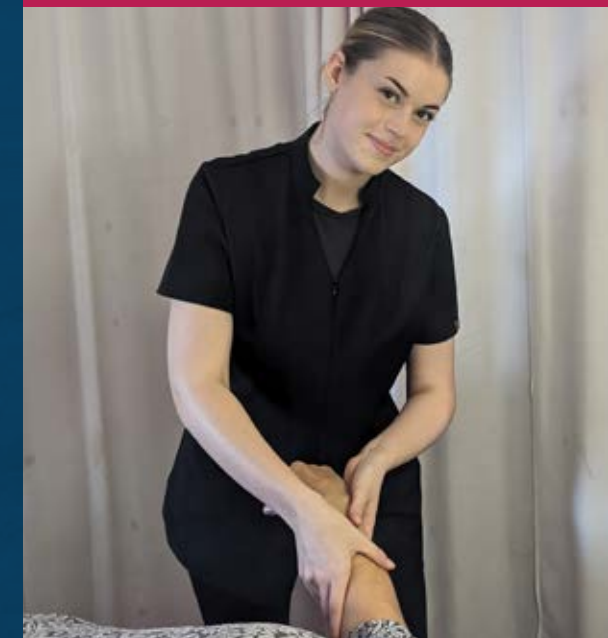
Profession Programme:

- ▶ Norwich City Football Club



Adult and community education

We're passionate about providing the widest possible range of learning activities in Adult Education, not only because it is important to do so but because learning really does enrich people's lives. We aim to offer the best possible experience for adult learners in the region and were recently awarded as Highly Commended for being an excellent provider. When you join a class, you can be assured a high quality service, taught by well qualified and enthusiastic tutors. We offer a huge variety of courses; visit our website www.elycollege.com/community for further information.





Valued member of the community

Ely College is a valued member of the wider community and a source of immense pride.

Drawing upon the Village College roots of the Trust, we firmly believe our role is to provide for all members of the community we serve. The college's facilities are open and widely used by the community, and we offer a wide range of popular adult and community education classes.

Students are given many opportunities to take a lead in the college and in their Houses. They can run for election to become one of our Student Ambassadors, join the Student Council as Form or House Representatives or become a House Captain, and in doing so will work towards their Leadership PLEDGE whilst airing their views and concerns.

Each House has a chosen charity that they support and students are encouraged to volunteer in the wider community.

Establishing close links with younger students at nearby primary schools is also important, and we will be inviting them into the college to take part in a range of sporting, science and cultural projects. Some of the college's teachers will also be attending local primary schools to provide the students with wider opportunities in areas such as languages, music, drama and sport.



Our Student Ambassadors

Part of the Meridian Trust family.



Lantern Community
Primary School



Downham Feoffees
Primary Academy



Swavesey
Village College



North Cambridge
Academy



Northstowe
Secondary College



The Ferrers
School



Harrold
Primary Academy



Bar Hill
Primary School



Great Ouse
Primary Academy



Northstowe
Martin Bacon Academy



Bishop Laney
Sixth Form



NenePark
Academy



Stamford Welland
Academy



Sawtry Village
Academy



West Town
Primary Academy



Sawtry
Junior Academy



Stratton
Upper School



GREATER
PETERBOROUGH
UTC



LINCROFT
ACADEMY



Weldon Village
Academy



ELY COLLEGE

Ely College, Downham Road, Ely, CB6 2SH

Tel: 01353 667763

Email: office@elycollege.co.uk

Web: www.elycollege.com

Twitter: @elycollege

Facebook: @ElyCollegeMT

Ofsted
Good
Provider



MUSIC MARK
SCHOOL



Artsmark
Silver Award
Awarded by Arts
Council England